



Information Service

Integration and use instructions

Table of contents

1	About Information Service	2
2	Information Service Integration	2
2.1	Pre-requisites	2
2.1.1	<i>Firewall openings</i>	2
2.1.2	<i>User credentials</i>	2
2.2	Description of request	4
2.3	Integration Procedure	5
2.3.1	<i>Web Service</i>	5
2.3.2	<i>Request Limitations</i>	5
3	Usage	6
3.1	Interfaces	6
3.1.1	<i>Request Format</i>	6
3.1.2	<i>Result Format</i>	7
3.1.3	<i>Supported Data Flows</i>	8
3.1.4	<i>Handling of Optional Parameters</i>	80
3.1.5	<i>Full example of the XML when sending request</i>	80

eSett

2021-07-27

Public

10.10.2024

1 About Information Service

Information Service (INFS) is a web service provided by eSett for the use of members of Nordic Imbalance Settlement.

The purpose of Information Service is to enable market parties to request information from Nordic Imbalance Settlement system in machine readable form.

This allows Market Participants to retrieve hourly data (such as metered values in selected consumption points, reported bilateral trade values etc., see full list of supported data flows in [Chapter 3.1.3](#)) and structure data, to which Participant has access.

2 Information Service Integration

2.1 Pre-requisites

There are two pre-requisites, which needs to be made before user can make any queries towards Information Service and receive data:

1. firewall rules of user and eSett would have to allow queries and answers
2. user credentials used to make the queries would have to be entitled to ask for settlement data of the Market Participant.

2.1.1 Firewall openings

To access Information Service and to be able to make any requests, firewall opening(s) towards Information Service needs to be made.

Possibly, also user needs to make a firewall opening to be able to make a query and receive data. This action is Information Service user's own responsibility.

Firewall opening can be order as a Service Request from eSett Service desk either via [web form](#), or via email from settlement@esett.com.

2.1.2 User credentials

User credentials used in Information Service are the same, which are used in another Service hosted by eSett, the [Online Service](#).

To make queries to Information Service, user must have either of following rights:

- External Interface Role - Read (R)
- External Interface Role - Read and Write (R/W).

The permissions can be verified via Online Service by the Administrator user of user's Company (ADMINISTRATION > Users).

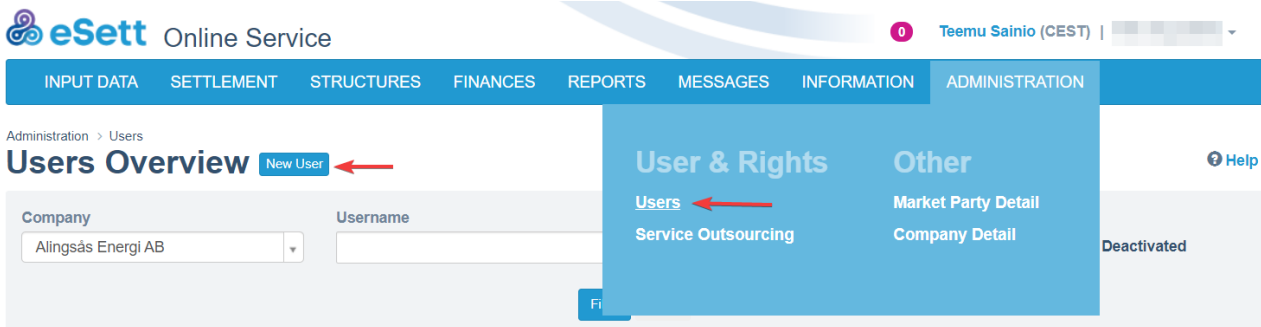
eSett

2021-07-27

Public

10.10.2024

Below are couple images to help with adding or editing permissions in Online Service.



1. **Select ADMINISTRATION and under User & Rights choose Users**
2. **Next to Users overview heading, there is New user button**

New User Account

Company *

Personal information

First Name *
Required field

Last Name *
Required field

Email *
john.smith@company.eu

Notification Email *
john.smith@company.eu

Phone *
+358123456789
Required field

System-Related information

User Type *

User Administrator

Username *
Required field

Preferred Units *
 MWh kWh

Preferred Decimal Unit *
6 decimals (0,123456)

Preferred Timezone *
EET (UTC+2) / EEST (UTC+3)

Assigned Rights

Market Role *
None

Invoices Role *
None

Collateral Role *
None

External Interface Role *
None

3. **Fill the form to create a new user for your company**

10.10.2024

[Refresh](#) [Export to Excel](#) [Save Settings](#) [Restore Default](#) [View Columns](#)

Username	First Name	Last Name	Market Role	Invoices Role	Collateral Role	External Interface Role	User Type	Validity
EMPTY_DSO_M2M	EMPTY DSO	M2M	N	N	N	N	User	Active

User preference

Preferred MP - Market Activity	
Preferred MP - Grid Activity	
Preferred Language	English
Preferred Decimal Unit	6
Preferred Units	MWh
Preferred Timezone	CET (UTC+1) / CEST (UTC+2)

Contact details

Email	empty_email
Phone	+000

[Edit](#) [Deactivate](#) [Reset Password](#)

Total pages: 1 (1 rows)

- You can edit existing user rights and info from the same page or reset the accounts password, if needed.**

2.2 Description of request

Information Service uses common Request-Reply synchronous communication pattern.

Following figure explains the composition of Web Service Request Interface.

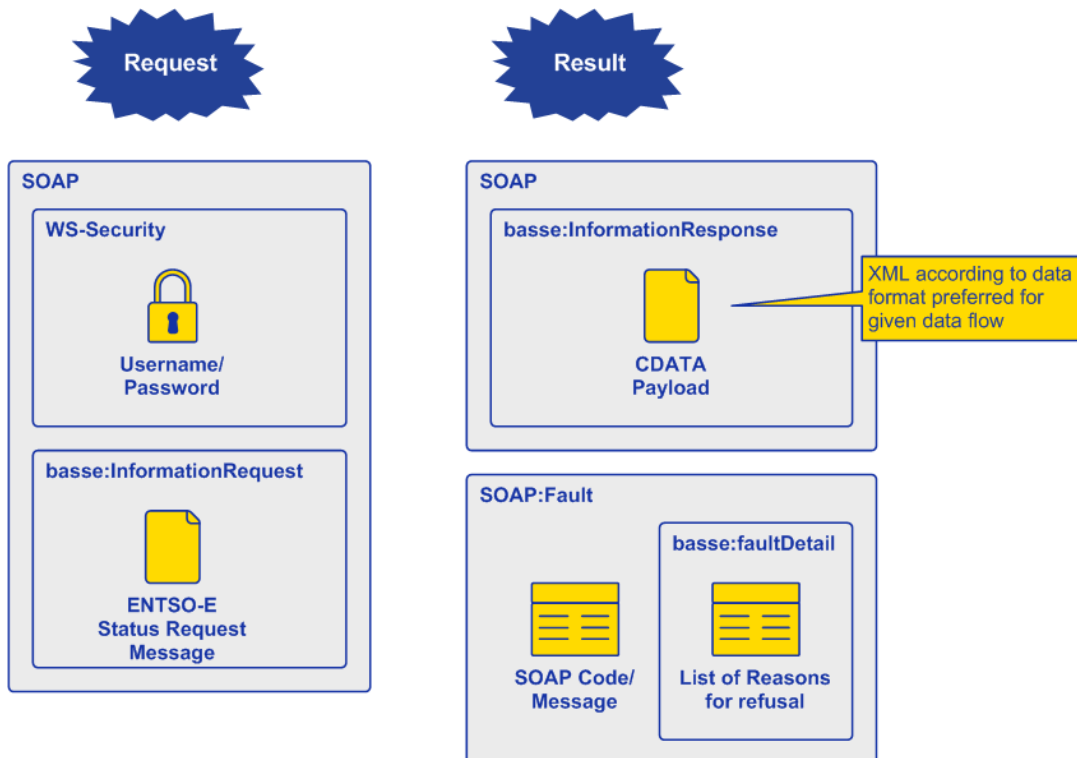


Figure: Physical Request Format

eSett

2021-07-27

Public

10.10.2024

The request uses WS-Security envelope to transmit the [user's credentials](#).

The request itself is composed as ENTSO-E Status Request document.

WSDL URL location can be found in Online Service's frontpage as Web Service URL. WSDL file can be requested from the Information Services web service URL which can be found at front page of online service and appending ?WSDL to the URL's ending.

WSDL is an XML notation describing a web services functionality.

Based on the request, Balance Settlement System creates a response, consisting of according business document (one of the supported ENTSO-E or ebIX formats) and passes it back to MPS as a Message. Response you receive is an XML document in format defined by the data flow specification. You can see examples of result formats below. In case of an error the system will return you, a SOAP fault document containing detailed information about the error in question.

2.3 Integration Procedure

Integration procedure is the creation of your application which is able to use Information Service. Creation of that application lies with the market party and this document helps with that process.

The main prerequisite for integration is ability to create ENTSO-E Status Request Document (with parameters defined in [3.1.1](#)) and process the returned Messages (of ENTSO-E or ebIX formats).

This can be done with any technical process and/or technology if it complies with Information Services prerequisites and is able to send and receive different document types Information Service requires.

2.3.1 Web Service

Market Party System implements a WS Client and configures it with Information Service URL (provided by eSett) and sets WS-Security username/password to credentials provided by eSett.

Market Party System uses this WS client to send Status Request Messages to Information Service and gets set of requested information contained in ENTSO-E or ebIX document (defined in 3.1.1).

2.3.2 Request Limitations

The technical configuration of Information Service allows setting following parameters to limit the usage. In case any of these limitations is exceeded by the caller of the Information Service; an appropriate exception is returned to the caller.

Limitation	Default Value	Description
Maximum Data Values in Request	74.000	Maximum number of data values in a single Request.
Maximum Number of Values per Minute	740.000	Maximum number of values requested by 1 Market Participant per one minute. This throttles the communication with single Market Participant and protects Information Service against abnormal usage.

3 Usage

3.1 Interfaces

Information Service interface allows Market Party System to request data from Balance Settlement System. The request is represented by an ENTSO-E Status Request Message.

Based on the request, Balance Settlement System creates a response, consisting of according to business document (one of the supported ENTSO-E or ebIX formats) and passes it back to Market Party System as a Message. Using this interface, Market Party System can retrieve information related to the Settlement process.

Information Service provides Web Service as a channel to access the information. Market Party System must implement specific WS Client to use Information Service. The details of the Web Service Channel are specified in section below.



Figure 7: Information Service Channel

3.1.1 Request Format

The Information Service uses ENTSO-E Status Request Document 2.0 as a request format. The document gives sufficient flexibility to request the data from Information Service. The identification of Data Flow and any parameters that need to be passed as data filtering criteria can be represented using the RequestComponent element (see example below).

Examples of different request formats can be found below underneath according to the data flow.

The available attributes for given data flows are documented in detail below. The RequestComponent attributes is designed in order to use standard message attributes (e.g. DocumentType or ProcessType) where possible. For header construction, please note following security notes:

- Add into soap header wsse:Security element with username and plain password.
- Add default wsa:Action and add default wsa:To

Roles and the corresponding codes in requests:

- Balance Responsible Party (Sender role code A08)
- Balancing Service Provider (Sender role code A48)
- Retailer (Sender role code A12)

eSett

2021-07-27

Public

10.10.2024

- Distribution System Operator (Sender role code A18)

3.1.2 Result Format

Every Data Flow supported by the Information Service can have in general different data format.

Response from method 'GetData' is in an XML format that corresponds to the data that is received. Please see following section for more details. For basic idea of how message is encapsulated see following example.

In this example a response for 'Production' dataflow is returned. Please see, that the actual response is an XML document encoded in the CDATA section. This is what you **receive** when the request is valid.

```
<s:Envelope xmlns:s="http://www.w3.org/2003/05/soap-envelope"
xmlns:a="http://www.w3.org/2005/08/addressing" xmlns:u="http://docs.oasis-
open.org/wss/2004/01/oasis-200401-wss-wssecurity-utility-1.0.xsd">
  <s:Header>
    <a:Action s:mustUnderstand="1">http://www.basse.eu/information-service-
0.1/IIInformationService/GetDataResponse</a:Action>
    <o:Security s:mustUnderstand="1" xmlns:o="http://docs.oasis-
open.org/wss/2004/01/oasis-200401-wss-wssecurity-secext-1.0.xsd">
      <u:Timestamp u:Id="_0">
        <u:Created>2015-06-29T15:35:00.487Z</u:Created>
        <u:Expires>2015-06-29T15:40:00.487Z</u:Expires>
      </u:Timestamp>
    </o:Security>
  </s:Header>
  <s:Body xmlns:xsi="http://www.w3.org/2001/XMLSchema-instance"
xmlns:xsd="http://www.w3.org/2001/XMLSchema">
    <GetDataResponse xmlns="http://www.basse.eu/information-service-1.0">
      <GetDataResult>
        <Content><![CDATA[<?xml version="1.0" encoding="utf-8"?>
<ValidatedDataForSettlementForAggregator
xmlns:xsi="http://www.w3.org/2001/XMLSchema-instance"
xmlns:xsd="http://www.w3.org/2001/XMLSchema" xmlns:un="un:unece:260:data:EEM-
ValidatedDataForSettlementForAggregator">
.....
</ValidatedDataForSettlementForAggregator>
]]>
      </Content>
    </GetDataResult>
  </GetDataResponse>
</s:Body>
</s:Envelope>
```


eSett

2021-07-27

Public

10.10.2024

</s:Body>

</s:Envelope>

3.1.3 Supported Data Flows

The table below describes.

- *Name and Description* of the Data Flow supported by Information Service
- *Format* of document that is returned by the Information Service
- *Format* of the request document that is needed
- Available *Selection Parameters* which a Market Participant can use when querying the Information Service.

Note that the below examples of requests and responses may differ from each other. These examples do not include all the headers required to send a message.

Table 1 Information Service data flows

Data Flow	Description	Market participant	Result Format	More information
Bilateral Trades	Hourly (for period before 15MTP) or 15-minutes (for period after 15MTP) values of Bilateral Trade	BRP, RE	ENTSO-E ESS Schedule Document v4r1	Chapter 3.1.3.1
PX Market Trades	Hourly (for period before 15MTP) or 15-minutes (for period after 15MTP) values of PX Market Trade	BRP, RE, NPS	ENTSO-E ESS Schedule Document v4r1	Chapter 3.1.3.2
PX Market Flows	Hourly (for period before 15MTP) or 15-minutes (for period after 15MTP) values of PX Market Flow	BRP, NPS	ENTSO-E ESS Schedule Document v4r1	Chapter 3.1.3.3
MGA Exchanges	Hourly (for period before 15MTP) or 15-minutes (for period after 15MTP) values of MGA Exchanges. MGA Exchange Trades are derived from the MGA Exchanges are provided together with MGA Exchanges.	DSO, Datahub	NEG (eBIX® based) Aggregated Data per Neighbouring Grid for Settlement Responsible (E31, E44)	Chapter 3.1.3.4

10.10.2024

Data Flow	Description	Market participant	Result Format	More information
MGA Exchange Trades	Hourly (for period before 15MTP) or 15-minutes (for period after 15MTP) values of MGA Exchanges. MGA Exchange Trades are derived from the MGA Exchanges are provided together with MGA Exchanges.	BRP, RE	ENTSO-E ESS Schedule Document	Chapter 3.1.3.5
Consumption	Hourly (for period before 15MTP) or 15-minutes (for period after 15MTP) values of Consumption	BRP, DSO, RE, Datahub	NEG (eBIX® based) Aggregated Data per MGA for Settlement Responsible (E31, E44)	Chapter 3.1.3.6
Production	Hourly (for period before 15MTP) or 15-minutes (for period after 15MTP) values of Production	BRP, DSO, RE, Datahub	NEG (eBIX® based) Validated Data for Settlement for Aggregator (E66, E44)	Chapter 3.1.3.7
Production Plan	Hourly (for period before 15MTP) or 15-minutes (for period after 15MTP) values of Production Plans	BRP	ENTSO-E ERRP Planned Resource Schedule Document v5r0	Chapter 3.1.3.8
Activated Reserves	Hourly/15-minute values of Activated Reserves	BRP, BSP	NEG (based on ENTSO-E ERRP) Reserve allocation result document	Chapter 3.1.3.9
Imbalance Adjustment	Hourly (for period before 15MTP) or 15-minutes (for period after 15MTP) values of Imbalance Adjustment	BRP	ENTSO-E ERRP Reserve Allocation Result Document	Chapter 3.1.3.10
Prices	Hourly (for period before 15MTP) or 15-minutes (for period after 15MTP) values of Prices that are used for settlement	BRP, DSO, NPS	NEG (based on ENTSO-E ECAN) Publication Document	Chapter 3.1.3.11
Consumption Imbalance	Hourly/aggregated values of all settlement results – Consumption Imbalance (volumes, amounts, ...)	BRP	ENTSO-E Energy Account Report Document (EAR) v1r2	Chapter 3.1.3.12

eSett

2021-07-27

Public

10.10.2024

Data Flow	Description	Market participant	Result Format	More information
Production Imbalance	Hourly/aggregated values of all settlement results – Production Imbalance (volumes, amounts, ...)	BRP	ENTSO-E Energy Account Report Document (EAR) v1r2	Chapter 3.1.3.13
Imbalance	Hourly (for period before 15MTP) or 15-minutes (for period after 15MTP) values of all settlement results – Imbalance (volumes, amounts, ...)	BRP	ENTSO-E Energy Account Report Document (EAR) v1r2	Chapter 3.1.3.14
MGA Imbalance	Hourly (for period before 15MTP) or 15-minutes (for period after 15MTP) values of all settlement results – MGA Imbalance (volumes, amounts, ...)	BRP, DSO, Datahub	ENTSO-E Energy Account Report Document (EAR) v1r2	Chapter 3.1.3.15
Production per Production Unit Type and MGA	Hourly (for period before 15MTP) or 15-minutes (for period after 15MTP) values of production per Production Unit Type and MGA	TSO	Basse Time Series Document	Chapter 3.1.3.16
MGA-MBA Relations	Service provides MGA-MBA relations in country specified in the request.	DSO, TSO, BRP, RE	NBS BRS for Master Data v1r8A - 20180606 (Ediel.org)	Chapter 3.1.3.17
Capacity Reserves	Hourly (for period before 15MTP) or 15-minutes (for period after 15MTP) values of Capacity Reserves	BRP, BSP	ENTSO-E ERRP Reserve Allocation Result Document	Chapter 3.1.3.18
Merged Production	Hourly (for period before 15MTP) or 15-minutes (for period after 15MTP) values of Merged Production	RE, BRP, DSO, Datahub	NEG (ebIX® based) Aggregated Data per MGA (E31, E44) - production	Chapter 3.1.3.19

eSett

2021-07-27

Public

10.10.2024

3.1.3.1 Bilateral Trades

RequestedAttribute	RequestedAttributeValue
"DataFlow"	"BIT"
"TimeResolution"	"P1Y" – for yearly aggregated data "P1M" – for monthly aggregated data "P7D" – for weekly aggregated data "P1D" – for daily aggregated data "PT1H" – for hourly data "PT15M" – for 15-minutes data
"TimeInterval"	YYYY-MM-DDTHH:MMZ/YYYY-MM-DDTHH:MMZ System will take into account also parts of the intervals. So for example if there are demanded monthly aggregated data for this interval: "2015-01-02T02:00Z/2015-02-01T02:00Z" system will return data for January 2015 and February 2015.
"InBRP" Optional	CODE – in v attribute CODING SCHEME – in CodingScheme attribute Code and Coding Scheme of IN BRP of Bilateral Trade
"OutBRP" Optional	CODE – in v attribute CODING SCHEME – in CodingScheme attribute Code and Coding Scheme of OUT BRP of Bilateral Trade
"AgreementID" Optional	Agreement ID of Bilateral Trade. 1 "1" – for Bilateral Trades only between BRPs 2 ID Number – for Bilateral Trades between Retailers
"MBA" Optional	CODE – in v attribute CODING SCHEME – in CodingScheme attribute Code and Coding Scheme of desired MBA

Response example

```

<?xml version="1.0" encoding="utf-8"?>
<ScheduleDocument xmlns:xsi="http://www.w3.org/2001/XMLSchema-instance"
xmlns:xsd="http://www.w3.org/2001/XMLSchema" xmlns="urn:entsoe.eu:wgedi:ess:scheduledocument:4:1">
  <DocumentIdentification v="INFS-BITI-1" />
  <DocumentVersion v="1" />
  <DocumentType v="A01" />

```

eSett

2021-07-27

Public

10.10.2024

```
<ProcessType v="Z05" />
<SenderIdentification v="44X-00000000004B" codingScheme="A01" />
<SenderRole v="A05" />
<ReceiverIdentification v="BRP1" codingScheme="A01" />
<ReceiverRole v="A08" />
<CreationDateTime v="2015-12-10T12:00Z" />
<ScheduleTimeInterval v="2015-08-14T22:00Z/2015-11-10T22:00Z" />
<Domain v="10Y1001A1001A91G" codingScheme="A01" />
<ScheduleTimeSeries>
  <SendersTimeSeriesIdentification v="v1" />
  <SendersTimeSeriesVersion v="1" />
  <BusinessType v="A08" />
  <Product v="8716867000030" />
  <ObjectAggregation v="A01" />
  <InArea v="MBA" codingScheme="A01" />
  <OutArea v="MBA" codingScheme="A01" />
  <InParty v="BRP2" codingScheme="A01" />
  <OutParty v="BRP1" codingScheme="A01" />
  <CapacityAgreementIdentification v="1" />
  <MeasurementUnit v="MWH" />
  <Period>
    <TimeInterval v="2015-09-10T15:00Z/2015-09-10T17:00Z" />
    <Resolution v="PT1H" />
    <Interval>
      <Pos v="1" />
      <Qty v="3" />
    </Interval>
    <Interval>
      <Pos v="2" />
      <Qty v="5" />
    </Interval>
  </Period>
</ScheduleTimeSeries>
</ScheduleDocument>
```

10.10.2024

Request example

```

<soap:Envelope xmlns:soap="http://www.w3.org/2003/05/soap-envelope"
xmlns:inf="http://www.basse.eu/information-service-1.0"
xmlns:urn="urn:entsoe.eu:wgedi:components">
  <soap:Header/>
  <soap:Body>
    <inf:GetData>
      <inf:request >
        <urn:DocumentIdentification v="1"/>
        <urn:DocumentType v="A25"/>
        <urn:SenderIdentification v="BRP01" codingScheme="A01"/>
        <urn:SenderRole v="A08"/>
        <urn:ReceiverIdentification v=" " codingScheme="A01"/>
        <urn:ReceiverRole v="A05"/>
        <urn:CreationDateTime v="2015-07-20T00:00:00Z"/>

        <urn:RequestComponent>
          <urn:RequestedAttribute v="Dataflow"/>
          <urn:RequestedAttributeValue v="BIT"/>
        </urn:RequestComponent>
        <urn:RequestComponent>
          <urn:RequestedAttribute v="TimeInterval"/>
          <urn:RequestedAttributeValue v="2015-08-14T22:00:00Z/2015-11-
10T22:00:00Z"/>
        </urn:RequestComponent>
        <urn:RequestComponent>
          <urn:RequestedAttribute v="TimeResolution"/>
          <urn:RequestedAttributeValue v="PT1H"/>
        </urn:RequestComponent>

      </inf:request>
    </inf:GetData>
  </soap:Body>
</soap:Envelope>

```

3.1.3.2 PX Market Trades

eSett

2021-07-27

Public

10.10.2024

RequestedAttribute	RequestedAttributeValue
"DataFlow"	"PXT"
"TimeResolution"	<p>"P1Y" – for yearly aggregated data</p> <p>"P1M" – for monthly aggregated data</p> <p>"P7D" – for weekly aggregated data</p> <p>"P1D" – for daily aggregated data</p> <p>"PT1H" – for hourly data</p> <p>"PT15M" – for 15-minutes data</p>
"TimeInterval"	<p>YYYY-MM-DDTHH:MMZ/YYYY-MM-DDTHH:MMZ</p> <p>System will take into account also parts of the intervals. So for example if there are demanded monthly aggregated data for this interval: "2015-01-02T02:00Z/2015-02-01T02:00Z" system will return data for January 2015 and February 2015.</p>
<p>"PartyBRP" - for PX Market Trades linked to BRPs</p> <p>"PartyRE" – for PX Market Trades linked to Res</p> <p>Optional</p>	<p>PARTY CODE – in v attribute</p> <p>CODING SCHEME – in CodingScheme attribute</p> <p>Code and Coding Scheme of desired party. In case of PX Market Trade it might be BRP or Retailer.</p>
"ProcessType"	<p>"A01" – for Elspot trades</p> <p>"A19" – for Elbas trades</p> <p>"Z15" – for External trades (Trades outside the Capacity Calculation Region)</p> <p>"A02" – for Intraday Auction</p>
<p>"MBA"</p> <p>Optional</p>	<p>CODE – in v attribute</p> <p>CODING SCHEME – in CodingScheme attribute</p> <p>Code and Coding Scheme of desired MBA</p>

Response example

```

<?xml version="1.0" encoding="utf-16"?>
<ScheduleDocument xmlns:xsd="http://www.w3.org/2001/XMLSchema"
xmlns:xsi="http://www.w3.org/2001/XMLSchema-instance"
xmlns="urn:entsoe.eu:wgedi:ess:scheduledocument:4:1">
  <DocumentIdentification v="INFS-PXTI-1" />
  <DocumentVersion v="1" />
  <DocumentType v="A01" />

```

eSett

2021-07-27

Public

10.10.2024

```
<ProcessType v="A01" />
<ScheduleClassificationType v="A02" />
<SenderIdentification v="44X-00000000004B" codingScheme="A01" />
<SenderRole v="A05" />
<ReceiverIdentification v="BRP1" codingScheme="A01" />
<ReceiverRole v="A08" />
<CreationDateTime v="2016-05-03T07:18:52.5688577Z" />
<ScheduleTimeInterval v="2016-01-01T22:00:00Z/2016-06-22T22:00:00Z" />
<Domain v="10Y1001A1001A91G" codingScheme="A01" />
<SubjectParty v="BRP1" codingScheme="A01" />
<SubjectRole v="A08" />
<ScheduleTimeSeries>
  <SendersTimeSeriesIdentification v="PXT1" />
  <SendersTimeSeriesVersion v="1" />
  <BusinessType v="A08" />
  <Product v="8716867000030" />
  <ObjectAggregation v="A01" />
  <InArea v="MGA1" codingScheme="A01" />
  <InParty v="RE1" codingScheme="A01" />
  <MeasurementUnit v="MWH" />
  <Period>
    <TimeInterval v="2016-04-21T22:00:00Z/2016-04-22T22:00:00Z" />
    <Resolution v="PT1H" />
    <Interval>
      <Pos v="1" />
      <Qty v="5" />
    </Interval>
    ...
    <Interval>
      <Pos v="24" />
      <Qty v="120" />
    </Interval>
  </Period>
</ScheduleTimeSeries>
```


eSett

2021-07-27

Public

10.10.2024

</ScheduleDocument>

Request example

```

<soap:Envelope xmlns:soap="http://www.w3.org/2003/05/soap-envelope"
xmlns:inf="http://www.basse.eu/information-service-1.0"
xmlns:urn="urn:entsoe.eu:wgedi:components">
  <soap:Header/>
  <soap:Body>
    <inf:GetData>
      <inf:request DtdVersion="?" DtdRelease="?">
        <urn:DocumentIdentification v="INFS-PXTI-1"/>
        <urn:DocumentType v="A25"/>
        <urn:SenderIdentification v="BRP01" codingScheme="A01"/>
        <urn:SenderRole v="A08"/>
        <urn:ReceiverIdentification v=" " codingScheme="A01"/>
        <urn:ReceiverRole v="A05"/>
        <urn:CreationDateTime v="2015-07-20T00:00:00Z"/>
        <urn:RequestComponent>
          <urn:RequestedAttribute v="Dataflow"/>
          <urn:RequestedAttributeValue v="PXT"/>
        </urn:RequestComponent>
        <urn:RequestComponent>
          <urn:RequestedAttribute v="TimeInterval"/>
          <urn:RequestedAttributeValue v="2015-08-31T22:00:00Z/2015-11-
01T22:00:00Z"/>
        </urn:RequestComponent>
        <urn:RequestComponent>
          <urn:RequestedAttribute v="TimeResolution"/>
          <urn:RequestedAttributeValue v="PT1H"/>
        </urn:RequestComponent>
        <urn:RequestComponent>
          <urn:RequestedAttribute v="PXTrader"/>
          <urn:RequestedAttributeValue v="BRP01" codingScheme="A01"/>
        </urn:RequestComponent>
        <urn:RequestComponent>

```

eSett

2021-07-27

Public

10.10.2024

```

        <urn:RequestedAttribute v="ProcessType"/>
        <urn:RequestedAttributeValue v="A01"/>
    </urn:RequestComponent>
    <urn:RequestComponent>
        <urn:RequestedAttribute v="MBA"/>
        <urn:RequestedAttributeValue v="FI1" codingScheme="A01"/>
    </urn:RequestComponent>
    <urn:RequestComponent>
        <urn:RequestedAttribute v="PortfolioID"/>
        <urn:RequestedAttributeValue v="333124"/>
    </urn:RequestComponent>
</inf:request>
</inf:GetData>
</soap:Body>
</soap:Envelope>

```

3.1.3.3 PX Market Flows

RequestedAttribute	RequestedAttributeValue
"DataFlow"	"PXF"
"TimeResolution"	"P1Y" – for yearly aggregated data "P1M" – for monthly aggregated data "P7D" – for weekly aggregated data "P1D" – for daily aggregated data "PT1H" – for hourly data "PT15M" – for 15-minutes data
"TimeInterval"	YYYY-MM-DDTHH:MMZ/YYYY-MM-DDTHH:MMZ System will take into account also parts of the intervals. So for example if there are demanded monthly aggregated data for this interval: "2015-01-02T02:00Z/2015-02-01T02:00Z" system will return data for January 2015 and February 2015.
"ProcessType"	"A01" – for Day-ahead trades "A19" – for Intraday Continuous trades "Z15" – for External trades (Trades outside the Capacity Calculation Region) "A02" Intraday Auction trades

eSett

2021-07-27

Public

10.10.2024

"InArea" Optional	CODE – in v attribute CODING SCHEME – in CodingScheme attribute Code and Coding Scheme of desired MBA
"OutArea" Optional	CODE – in v attribute CODING SCHEME – in CodingScheme attribute Code and Coding Scheme of desired MBA

Response example

```

<?xml version="1.0" encoding="utf-8"?>
<ScheduleDocument xmlns:xsi="http://www.w3.org/2001/XMLSchema-instance"
xmlns:xsd="http://www.w3.org/2001/XMLSchema" xmlns="urn:entsoe.eu:wgedi:ess:scheduledocument:4:1">
  <DocumentIdentification v="" />
  <DocumentVersion v="1" />
  <DocumentType v="A55" />
  <ProcessType v="A01" />
  <ScheduleClassificationType v="A02" />
  <SenderIdentification v="44X-00000000004B" codingScheme="A01" />
  <SenderRole v="A05" />
  <ReceiverIdentification v="BRP1" codingScheme="A01" />
  <ReceiverRole v="A08" />
  <CreationDateTime v="2015-12-10T14:00Z" />
  <ScheduleTimeInterval v="2015-10-01T00:00Z/2015-11-21T23:00Z" />
  <Domain v="10Y1001A1001A91G" codingScheme="A01" />
  <ScheduleTimeSeries>
    <SendersTimeSeriesIdentification v="PXF16" />
    <SendersTimeSeriesVersion v="1" />
    <BusinessType v="A66" />
    <Product v="8716867000030" />
    <ObjectAggregation v="A01" />
    <InArea v="MBA1" codingScheme="A01" />
    <OutArea v="MBA2" codingScheme="A01" />
    <MeasurementUnit v="MWH" />
    <Period>
      <TimeInterval v="2015-10-21T22:00Z/2015-10-27T22:00Z" />
    
```

eSett

2021-07-27

Public

10.10.2024

```

<Resolution v="PT1H" />
<Interval>
  <Pos v="1" />
  <Qty v="1" />
</Interval>
...
<Interval>
  <Pos v="144" />
  <Qty v="1" />
</Interval>
</Period>
</ScheduleTimeSeries>
</ScheduleDocument>

```

Request example

```

<soap:Envelope xmlns:soap="http://www.w3.org/2003/05/soap-envelope"
xmlns:inf="http://www.basse.eu/information-service-1.0" xmlns:urn="urn:entsoe.eu:wgedi:components">
  <soap:Header/>
  <soap:Body>
    <inf:GetData>
      <inf:request DtdVersion="?" DtdRelease="?">
        <urn:DocumentIdentification v=""/>
        <urn:DocumentType v="A25"/>
        <urn:SenderIdentification v="BRP01" codingScheme="A01"/>
        <urn:SenderRole v="A08"/>
        <urn:ReceiverIdentification v=" " codingScheme="A01"/>
        <urn:ReceiverRole v="A05"/>
        <urn:CreationDateTime v="2015-01-21T18:00:00Z"/>
        <urn:RequestComponent>
          <urn:RequestedAttribute v="Dataflow"/>
          <urn:RequestedAttributeValue v="PXF" />
        </urn:RequestComponent>
      </inf:request>
    </inf:GetData>
  </soap:Body>
</soap:Envelope>

```

10.10.2024

```
<urn:RequestComponent>
  <urn:RequestedAttribute v="TimeInterval"/>

  <urn:RequestedAttributeValue v="2015-10-01T00:00:00Z/2015-11-21T23:00:00Z" />
</urn:RequestComponent>

<urn:RequestComponent>
  <urn:RequestedAttribute v="TimeResolution"/>
  <urn:RequestedAttributeValue v="PT1H" />
</urn:RequestComponent>

<urn:RequestComponent>
  <urn:RequestedAttribute v="InArea"/>
  <urn:RequestedAttributeValue v="SE1" codingScheme="A01"/>
</urn:RequestComponent>

<urn:RequestComponent>
  <urn:RequestedAttribute v="OutArea"/>
  <urn:RequestedAttributeValue v="FI1" codingScheme="A01"/>
</urn:RequestComponent>

<urn:RequestComponent>
  <urn:RequestedAttribute v="ProcessType"/>
  <urn:RequestedAttributeValue v="A01" />
</urn:RequestComponent>
</inf:request>
</inf:GetData>
</soap:Body>
</soap:Envelope>
```

3.1.3.4 MGA Exchanges

RequestedAttribute

RequestedAttributeValue

eSett

2021-07-27

Public

10.10.2024

"DataFlow"	"MGX"
"TimeResolution"	<p>"P1Y" – for yearly aggregated data</p> <p>"P1M" – for monthly aggregated data</p> <p>"P7D" – for weekly aggregated data</p> <p>"P1D" – for daily aggregated data</p> <p>"PT1H" – for hourly data</p> <p>"PT15M" – for 15-minutes data</p>
"TimeInterval"	<p>YYYY-MM-DDTHH:MMZ/YYYY-MM-DDTHH:MMZ</p> <p>System will take into account also parts of the intervals. So for example if there are demanded monthly aggregated data for this interval: "2015-01-02T02:00Z/2015-02-01T02:00Z" system will return data for January 2015 and February 2015.</p>
"InMGA" Optional	<p>PARTY CODE – in v attribute</p> <p>CODING SCHEME – in CodingScheme attribute</p> <p>Code and Coding Scheme of In MGA from MGA Oriented Border</p>
"OutMGA" Optional	<p>PARTY CODE – in v attribute</p> <p>CODING SCHEME – in CodingScheme attribute</p> <p>Code and Coding Scheme of Out MGA from MGA Oriented Border</p>

Response example

```

<?xml version="1.0" encoding="utf-8"?>
<AggregatedDataPerNeighboringGridForSettlementForSettlementResponsible
xmlns:xsd="http://www.w3.org/2001/XMLSchema" xmlns:xsi="http://www.w3.org/2001/XMLSchema-instance"
xmlns="un:unece:260:data:EEM-AggregatedDataPerNeighboringGridForSettlementForSettlementResponsible">
  <Header>
    <Identification>test</Identification>
    <DocumentType listAgencyIdentifier="260">E31</DocumentType>
    <Creation>2016-02-01T14:00:00Z</Creation>
    <SenderEnergyParty>
      <Identification schemeAgencyIdentifier="305"> </Identification>
    </SenderEnergyParty>
    <RecipientEnergyParty>
      <Identification schemeAgencyIdentifier="305">DSO</Identification>
    </RecipientEnergyParty>
  </Header>

```

eSett

2021-07-27

Public

10.10.2024

```
<ProcessEnergyContext>
  <EnergyBusinessProcess listAgencyIdentifier="260">E44</EnergyBusinessProcess>
  <EnergyBusinessProcessRole listAgencyIdentifier="330">DDX</EnergyBusinessProcessRole>
  <EnergyIndustryClassification listAgencyIdentifier="330">23</EnergyIndustryClassification>
</ProcessEnergyContext>
<PayloadEnergyTimeSeries>
  <Identification>1</Identification>
  <RegistrationDateTime>0001-01-01T00:00:00</RegistrationDateTime>
  <ObservationPeriodTimeSeriesPeriod>
    <ResolutionDuration>PT1H</ResolutionDuration>
    <Start>2015-08-31T22:00:00Z</Start>
    <End>2015-09-01T22:00:00Z</End>
  </ObservationPeriodTimeSeriesPeriod>
  <ProductIncludedProductCharacteristic>
    <Identification schemeAgencyIdentifier="9">8716867000030</Identification>
    <UnitType listAgencyIdentifier="330">MWH</UnitType>
  </ProductIncludedProductCharacteristic>
  <MPDetailMeasurementMeteringPointCharacteristic>
    <MeteringPointType listAgencyIdentifier="260">E20</MeteringPointType>
  </MPDetailMeasurementMeteringPointCharacteristic>
  <InAreaUsedDomainLocation>
    <Identification schemeAgencyIdentifier="305">MGA02</Identification>
  </InAreaUsedDomainLocation>
  <OutAreaUsedDomainLocation>
    <Identification schemeAgencyIdentifier="305">MGA01</Identification>
  </OutAreaUsedDomainLocation>
  <ObservationIntervalObservationPeriod>
    <Sequence>1</Sequence>
    <ObservationDetailEnergyObservation>
      <EnergyQuantity>1</EnergyQuantity>
    </ObservationDetailEnergyObservation>
  </ObservationIntervalObservationPeriod>
  <ObservationIntervalObservationPeriod>
```

...

eSett

2021-07-27

Public

10.10.2024

```

<Sequence>264</Sequence>
<ObservationDetailEnergyObservation>
  <EnergyQuantity>1</EnergyQuantity>
</ObservationDetailEnergyObservation>
</ObservationIntervalObservationPeriod>
</PayloadEnergyTimeSeries>
</AggregatedDataPerNeighboringGridForSettlementForSettlementResponsible>

```

Request example

```

<soap:Envelope xmlns:soap="http://www.w3.org/2003/05/soap-envelope"
xmlns:inf="http://www.basse.eu/information-service-1.0" xmlns:urn="urn:entsoe.eu:wgedi:components">
  <soap:Header/>
  <soap:Body>
    <inf:GetData>

      <inf:request DtdVersion="?" DtdRelease="?">

        <urn:DocumentIdentification v="1"/>
        <urn:DocumentType v="A25"/>
        <urn:SenderIdentification v="DSO01" codingScheme="A01"/>
        <urn:SenderRole v="A18"/>
        <urn:ReceiverIdentification v=" " codingScheme="A01"/>
        <urn:ReceiverRole v="A05"/>
        <urn:CreationDateTime v="2015-01-21T18:00:00Z"/>

        <urn:RequestComponent>
          <urn:RequestedAttribute v="Dataflow"/>
          <urn:RequestedAttributeValue v="MgaExchanges" />
        </urn:RequestComponent>

        <urn:RequestComponent>
          <urn:RequestedAttribute v="TimeInterval"/>
          <urn:RequestedAttributeValue v="2015-08-10T00:00:00Z/2015-11-21T23:00:00Z" />
        </urn:RequestComponent>

```


eSett

2021-07-27

Public

10.10.2024

```

    <urn:RequestComponent>
      <urn:RequestedAttribute v="TimeResolution"/>
      <urn:RequestedAttributeValue v="PT1H" />
    </urn:RequestComponent>

  </inf:request>
</inf:GetData>
</soap:Body>
</soap:Envelope>

```

3.1.3.5 MGA Exchange Trades

RequestedAttribute	RequestedAttributeValue
"DataFlow"	"MGT"
"TimeResolution"	"P1Y" – for yearly aggregated data "P1M" – for monthly aggregated data "P7D" – for weekly aggregated data "P1D" – for daily aggregated data "PT1H" – for hourly data "PT15M" – for 15-minutes data
"TimeInterval"	YYYY-MM-DDTHH:MM:SSZ/YYYY-MM-DDTHH:MM:SSZ System will take into account also parts of the intervals. So for example if there are demanded monthly aggregated data for this interval: "2015-01-02T02:00:00Z/2015-02-01T02:00:00Z" system will return data for January 2015 and February 2015.
"InRE" Optional	CODE – in v attribute CODING SCHEME – in CodingScheme attribute Code and Coding Scheme of In Retailer of MGA Exchange Trade
"OutRE" Optional	CODE – in v attribute CODING SCHEME – in CodingScheme attribute Code and Coding Scheme of Out Retailer of MGA Exchange Trade
"InMGA" Optional	CODE – in v attribute CODING SCHEME – in CodingScheme attribute Code and Coding Scheme of In MGA of MGA Exchange Trade

eSett

2021-07-27

Public

10.10.2024

"OutMGA"	CODE – in v attribute
Optional	CODING SCHEME – in CodingScheme attribute
	Code and Coding Scheme of Out MGA of MGA Exchange Trade

Response example

```
<?xml version="1.0" encoding="utf-8"?>
<ScheduleDocument xsi:schemaLocation="urn:entsoe.eu:wgedi:ess:scheduledocument:4:1 urn-entsoe-eu-wgedi-ess-scheduledocument-4-1.xsd" xmlns:xsd="http://www.w3.org/2001/XMLSchema"
xmlns:xsi="http://www.w3.org/2001/XMLSchema-instance"
xmlns="urn:entsoe.eu:wgedi:ess:scheduledocument:4:1">
  <DocumentIdentification v="INFS-MGT-1" />
  <DocumentVersion v="1" />
  <DocumentType v="A01" />
  <ProcessType v="Z05" />
  <ScheduleClassificationType v="A02" />
  <SenderIdentification v="44X-00000000004B" codingScheme="A01" />
  <SenderRole v="A05" />
  <ReceiverIdentification v="BRP01" codingScheme="A01" />
  <ReceiverRole v="A08" />
  <CreationDateTime v="2018-10-17T11:34:46Z" />
  <ScheduleTimeInterval v="2018-07-01T00:00Z/2018-07-02T00:00Z" />
  <Domain v="10Y1001A1001A91G" codingScheme="A01" />
  <ScheduleTimeSeries>
    <SendersTimeSeriesIdentification v="MnmXCA0ccESpFXO6T2YruA" />
    <SendersTimeSeriesVersion v="1" />
    <BusinessType v="A03" />
    <Product v="8716867000030" />
    <ObjectAggregation v="A01" />
    <InArea v="MGA04" codingScheme="A01" />
    <OutArea v="MGA03" codingScheme="A01" />
    <InParty v="RE04" codingScheme="A01" />
    <OutParty v="RE03" codingScheme="A01" />
    <MeasurementUnit v="MWH" />
    <Period>
      <TimeInterval v="2018-07-01T00:00Z/2018-07-02T00:00Z" />
    </Period>
  </ScheduleTimeSeries>
</ScheduleDocument>
```

eSett

2021-07-27

Public

10.10.2024

```
<Resolution v="PT1H" />
```

```
<Interval>
```

```
<Pos v="1" />
```

```
<Qty v="5" />
```

```
</Interval>
```

```
<Interval>
```

```
<Pos v="2" />
```

```
<Qty v="10" />
```

```
</Interval>
```

```
<Interval>
```

```
<Pos v="3" />
```

```
<Qty v="15" />
```

```
</Interval>
```

```
<Interval>
```

```
<Pos v="4" />
```

```
<Qty v="20" />
```

```
</Interval>
```

```
<Interval>
```

```
<Pos v="5" />
```

```
<Qty v="25" />
```

```
</Interval>
```

```
<Interval>
```

```
<Pos v="6" />
```

```
<Qty v="30" />
```

```
</Interval>
```

```
<Interval>
```

```
<Pos v="7" />
```

```
<Qty v="35" />
```

```
</Interval>
```

```
<Interval>
```

```
<Pos v="8" />
```

```
<Qty v="40" />
```

```
</Interval>
```

```
<Interval>
```

eSett

2021-07-27

Public

10.10.2024

```
<Pos v="9" />
<Qty v="45" />
</Interval>
<Interval>
  <Pos v="10" />
  <Qty v="50" />
</Interval>
<Interval>
  <Pos v="11" />
  <Qty v="55" />
</Interval>
<Interval>
  <Pos v="12" />
  <Qty v="60" />
</Interval>
<Interval>
  <Pos v="13" />
  <Qty v="65" />
</Interval>
<Interval>
  <Pos v="14" />
  <Qty v="70" />
</Interval>
<Interval>
  <Pos v="15" />
  <Qty v="75" />
</Interval>
<Interval>
  <Pos v="16" />
  <Qty v="80" />
</Interval>
<Interval>
  <Pos v="17" />
  <Qty v="85" />
```

eSett

2021-07-27

Public

10.10.2024

```
</Interval>
<Interval>
  <Pos v="18" />
  <Qty v="90" />
</Interval>
<Interval>
  <Pos v="19" />
  <Qty v="95" />
</Interval>
<Interval>
  <Pos v="20" />
  <Qty v="100" />
</Interval>
<Interval>
  <Pos v="21" />
  <Qty v="105" />
</Interval>
<Interval>
  <Pos v="22" />
  <Qty v="110" />
</Interval>
<Interval>
  <Pos v="23" />
  <Qty v="115" />
</Interval>
<Interval>
  <Pos v="24" />
  <Qty v="120" />
</Interval>
</Period>
</ScheduleTimeSeries>
</ScheduleDocument>
```

3.1.3.6 Consumption

eSett

2021-07-27

Public

10.10.2024

RequestedAttribute	RequestedAttributeValue
"DataFlow"	"REC"
"TimeResolution"	<p>"P1Y" – for yearly aggregated data</p> <p>"P1M" – for monthly aggregated data</p> <p>"P7D" – for weekly aggregated data</p> <p>"P1D" – for daily aggregated data</p> <p>"PT1H" – for hourly data</p> <p>"PT15M" – for 15-minutes data</p>
"TimeInterval"	<p>YYYY-MM-DDTHH:MMZ/YYYY-MM-DDTHH:MMZ</p> <p>System will take into account also parts of the intervals. So for example if there are demanded monthly aggregated data for this interval: "2015-01-02T02:00Z/2015-02-01T02:00Z" system will return data for January 2015 and February 2015.</p>
<p>"PartyBRP" - for Consumption linked to BRPs</p> <p>"PartyRE" – for Consumption linked to Res</p> <p>Optional</p>	<p>PARTY CODE – in v attribute</p> <p>CODING SCHEME – in CodingScheme attribute</p> <p>Code and Coding Scheme of desired party. In case of Consumption it might be BRP or Retailer.</p>
<p>"MGA"</p> <p>Optional</p>	<p>MGA CODE – in v attribute</p> <p>MGA CODING SCHEME – in CodingScheme attribute</p> <p>Code and Coding scheme of MGA</p>
<p>"SettlementMethodType"</p> <p>Optional</p>	<p>"E01" – for Profiled</p> <p>"E02" - for Metered</p> <p>"E15" Non-profiled with special rules (Flex settled)</p>
<p>"BusinessType"</p> <p>Optional</p>	<p>"A04" – for General</p> <p>"Z63" – for Large Installation</p> <p>"Z62" – for Pumped</p> <p>"A15" – for Losses</p> <p>"A07" – for Pumped</p> <p>"A72" – for Interruptible</p> <p>"B36" – for Production Units Own Consumption</p>
<p>"AssetType"</p> <p>Optional</p>	<p>"B25" – for Energy Storage</p>

eSett

2021-07-27

Public

10.10.2024

Response example

```
<?xml version="1.0" encoding="utf-8"?>
<AggregatedDataPerMGAForSettlementForSettlementResponsible
xmlns:xsi="http://www.w3.org/2001/XMLSchema-instance" xmlns:xsd="http://www.w3.org/2001/XMLSchema"
xmlns="un:unece:260:data:EEM-AggregatedDataPerMGAForSettlementForSettlementResponsible">
  <Header>
    <Identification>INFS-RECI-1</Identification>
    <DocumentType listAgencyIdentifier="260">E31</DocumentType>
    <Creation>2015-12-10T12:00Z</Creation>
    <SenderEnergyParty>
      <Identification schemeAgencyIdentifier="305"> </Identification>
    </SenderEnergyParty>
    <RecipientEnergyParty>
      <Identification schemeAgencyIdentifier="305">DSO</Identification>
    </RecipientEnergyParty>
  </Header>
  <ProcessEnergyContext>
    <EnergyBusinessProcess listAgencyIdentifier="260">E44</EnergyBusinessProcess>
    <EnergyBusinessProcessRole listAgencyIdentifier="330">DDX</EnergyBusinessProcessRole>
    <EnergyIndustryClassification listAgencyIdentifier="330">23</EnergyIndustryClassification>
  </ProcessEnergyContext>
  <PayloadEnergyTimeSeries>
    <Identification>CNS62</Identification>
    <RegistrationDateTime>0001-01-01T00:00:00</RegistrationDateTime>
    <ObservationPeriodTimeSeriesPeriod>
      <ResolutionDuration>PT1H</ResolutionDuration>
      <Start>2015-08-31T22:00Z</Start>
      <End>2015-09-03T22:00Z</End>
    </ObservationPeriodTimeSeriesPeriod>
    <BalanceResponsibleInvolvedEnergyParty>
      <Identification schemeAgencyIdentifier="305">RE</Identification>
    </BalanceResponsibleInvolvedEnergyParty>
    <BalanceSupplierInvolvedEnergyParty>
      <Identification schemeAgencyIdentifier="305">BRP</Identification>
    </BalanceSupplierInvolvedEnergyParty>
  </PayloadEnergyTimeSeries>
</AggregatedDataPerMGAForSettlementForSettlementResponsible>
```

eSett

2021-07-27

Public

10.10.2024

```

<ProductIncludedProductCharacteristic>
  <Identification schemeAgencyIdentifier="9">8716867000030</Identification>
  <UnitType listAgencyIdentifier="330">MWH</UnitType>
</ProductIncludedProductCharacteristic>
<MPDetailMeasurementMeteringPointCharacteristic>
  <MeteringPointType listAgencyIdentifier="260">E17</MeteringPointType>
  <SettlementMethodType listAgencyIdentifier="260">E02</SettlementMethodType>
  <BusinessType listAgencyIdentifier="330">A04</BusinessType>
</MPDetailMeasurementMeteringPointCharacteristic>
<MeteringGridAreaUsedDomainLocation>
  <Identification schemeAgencyIdentifier="305">MGA</Identification>
</MeteringGridAreaUsedDomainLocation>
<ObservationIntervalObservationPeriod>
  <Sequence>1</Sequence>
  <ObservationDetailEnergyObservation>
    <EnergyQuantity>0</EnergyQuantity>
  </ObservationDetailEnergyObservation>
</ObservationIntervalObservationPeriod>
...
  <Sequence>72</Sequence>
  <ObservationDetailEnergyObservation>
    <EnergyQuantity>0</EnergyQuantity>
  </ObservationDetailEnergyObservation>
</ObservationIntervalObservationPeriod>
</PayloadEnergyTimeSeries>
</AggregatedDataPerMGAForSettlementForSettlementResponsible>

```

Request example

```

<soap:Envelope xmlns:soap="http://www.w3.org/2003/05/soap-envelope"
xmlns:inf="http://www.basse.eu/information-service-1.0" xmlns:urn="urn:entsoe.eu:wgedi:components">
  <soap:Header/>
  <soap:Body>
    <inf:GetData>
      <inf:request >
        <urn:DocumentIdentification v="1"/>

```


eSett

2021-07-27

Public

10.10.2024

```

<urn:DocumentType v="A25"/>
<urn:SenderIdentification v="DSO01" codingScheme="A01"/>
<urn:SenderRole v="A18"/>
<urn:ReceiverIdentification v=" " codingScheme="A01"/>
<urn:ReceiverRole v="A05"/>
<urn:CreationDateTime v="2015-07-20T00:00:00Z"/>
<urn:RequestComponent>
  <urn:RequestedAttribute v="Dataflow"/>
  <urn:RequestedAttributeValue v="REC"/>
</urn:RequestComponent>
<urn:RequestComponent>
  <urn:RequestedAttribute v="TimeInterval"/>
  <urn:RequestedAttributeValue v="2015-11-11T22:00:00Z/2015-12-12T22:00:00Z"/>
</urn:RequestComponent>
<urn:RequestComponent>
  <urn:RequestedAttribute v="TimeResolution"/>
  <urn:RequestedAttributeValue v="PT1H"/>
</urn:RequestComponent>
</inf:request>
</inf:GetData>
</soap:Body>
</soap:Envelope>

```

3.1.3.7 Production

RequestedAttribute	RequestedAttributeValue
"DataFlow"	"RPM"
"TimeResolution"	"P1Y" – for yearly aggregated data "P1M" – for monthly aggregated data "P7D" – for weekly aggregated data "P1D" – for daily aggregated data "PT1H" – for hourly data "PT15M" – for 15-minutes data
"TimeInterval"	YYYY-MM-DDTHH:MMZ/YYYY-MM-DDTHH:MMZ

eSett

2021-07-27

Public

10.10.2024

	System will take into account also parts of the intervals. So for example if there are demanded monthly aggregated data for this interval: "2015-01-02T02:00Z/2015-02-01T02:00Z" system will return data for January 2015 and February 2015.
"ProductionUnit" Optional	CODE – in v attribute CODING SCHEME – in CodingScheme attribute Code and Coding Scheme of desired production unit.

Response example

```
<?xml version="1.0" encoding="utf-8"?>
<ValidatedDataForSettlementForAggregator xmlns:xsi="http://www.w3.org/2001/XMLSchema-instance"
xmlns:xsd="http://www.w3.org/2001/XMLSchema" xmlns="un:unece:260:data:EEM-
ValidatedDataForSettlementForAggregator">
  <Header>
    <Identification>1</Identification>
    <DocumentType listAgencyIdentifier="260">E66</DocumentType>
    <Creation>2015-12-10T12:00Z</Creation>
    <SenderEnergyParty>
      <Identification schemeAgencyIdentifier="305"> </Identification>
    </SenderEnergyParty>
    <RecipientEnergyParty>
      <Identification schemeAgencyIdentifier="305">DSO</Identification>
    </RecipientEnergyParty>
  </Header>
  <ProcessEnergyContext>
    <EnergyBusinessProcess listAgencyIdentifier="260">E44</EnergyBusinessProcess>
    <EnergyBusinessProcessRole listAgencyIdentifier="330">DDX</EnergyBusinessProcessRole>
    <EnergyIndustryClassification listAgencyIdentifier="330">23</EnergyIndustryClassification>
  </ProcessEnergyContext>
  <PayloadEnergyTimeSeries>
    <Identification>PROD1</Identification>
    <RegistrationDateTime>0001-01-01T00:00:00</RegistrationDateTime>
    <ObservationPeriodTimeSeriesPeriod>
      <ResolutionDuration>PT1H</ResolutionDuration>
      <Start>2015-10-18T00:00Z</Start>
      <End>2015-10-20T00:00Z</End>
    </ObservationPeriodTimeSeriesPeriod>
  </PayloadEnergyTimeSeries>
</ValidatedDataForSettlementForAggregator>
```

eSett

2021-07-27

Public

10.10.2024

```

</ObservationPeriodTimeSeriesPeriod>
<ProductIncludedProductCharacteristic>
  <Identification schemeAgencyIdentifier="9">8716867000030</Identification>
  <UnitType listAgencyIdentifier="330">MWH</UnitType>
</ProductIncludedProductCharacteristic>
<MPDetailMeasurementMeteringPointCharacteristic>
  <MeteringPointType listAgencyIdentifier="260">E18</MeteringPointType>
</MPDetailMeasurementMeteringPointCharacteristic>
<MeteringPointUsedDomainLocation>
  <Identification schemeAgencyIdentifier="305">PU</Identification>
</MeteringPointUsedDomainLocation>
<ObservationIntervalObservationPeriod>
  <Sequence>1</Sequence>
  <ObservationDetailEnergyObservation>
    <EnergyQuantity>240</EnergyQuantity>
    <QuantityQuality listAgencyIdentifier="330">21</QuantityQuality>
  </ObservationDetailEnergyObservation>
</ObservationIntervalObservationPeriod>
<ObservationIntervalObservationPeriod>
  <Sequence>2</Sequence>
  <ObservationDetailEnergyObservation>
    <EnergyQuantity>240</EnergyQuantity>
    <QuantityQuality listAgencyIdentifier="330">21</QuantityQuality>
  </ObservationDetailEnergyObservation>
</ObservationIntervalObservationPeriod>
</PayloadEnergyTimeSeries>
</ValidatedDataForSettlementForAggregator>

```

Request example

```

<soap:Envelope xmlns:soap="http://www.w3.org/2003/05/soap-envelope"
xmlns:inf="http://www.basse.eu/information-service-1.0" xmlns:urn="urn:entsoe.eu:wgedi:components">
  <soap:Header/>
  <soap:Body>
    <inf:GetData>

```

eSett

2021-07-27

Public

10.10.2024

```
<inf:request DtdVersion="?" DtdRelease="?">

  <urn:DocumentIdentification v="1"/>
  <urn:DocumentType v="A25"/>
  <urn:SenderIdentification v="DSO01" codingScheme="A01"/>
  <urn:SenderRole v="A18"/>
  <urn:ReceiverIdentification v=" " codingScheme="A01"/>
  <urn:ReceiverRole v="A05"/>
  <urn:CreationDateTime v="2015-01-21T18:00:00Z"/>

  <urn:RequestComponent>
    <urn:RequestedAttribute v="Dataflow"/>
    <urn:RequestedAttributeValue v="Production" />
  </urn:RequestComponent>

  <urn:RequestComponent>
    <urn:RequestedAttribute v="TimeInterval"/>
    <urn:RequestedAttributeValue v="2015-10-16T22:00:00Z/2015-10-19T23:00:00Z" />
  </urn:RequestComponent>

  <urn:RequestComponent>
    <urn:RequestedAttribute v="TimeResolution"/>
    <urn:RequestedAttributeValue v="P1D" />
  </urn:RequestComponent>

  <urn:RequestComponent>
    <urn:RequestedAttribute v="ProductionUnit"/>
    <urn:RequestedAttributeValue v="PU01" codingScheme="A01"/>
  </urn:RequestComponent>

</inf:request>
</inf:GetData>
</soap:Body>
```

eSett

2021-07-27

Public

10.10.2024

```
</soap:Envelope>
```

3.1.3.8 Production Plan

RequestedAttribute	RequestedAttributeValue
"DataFlow"	"PRP"
"TimeResolution"	"P1Y" – for yearly aggregated data "P1M" – for monthly aggregated data "P7D" – for weekly aggregated data "P1D" – for daily aggregated data "PT1H" – for hourly data "PT15M" – for 15-minutes data
"TimeInterval"	YYYY-MM-DDTHH:MMZ/YYYY-MM-DDTHH:MMZ System will take into account also parts of the intervals. So for example if there are demanded monthly aggregated data for this interval: "2015-01-02T02:00Z/2015-02-01T02:00Z" system will return data for January 2015 and February 2015.
"RegulationObject" Optional	CODE – in v attribute CODING SCHEME – in CodingScheme attribute Code and Coding Scheme of desired Regulation Object.
"MBA" Optional	CODE – in v attribute CODING SCHEME – in CodingScheme attribute Code and Coding Scheme of desired MBA

Response example

```
<?xml version="1.0" encoding="utf-8"?>
<PlannedResourceScheduleDocument xmlns:xsd="http://www.w3.org/2001/XMLSchema"
xmlns:xsi="http://www.w3.org/2001/XMLSchema-instance"
xmlns="urn:entsoe.eu:wgedi:errp:plannedresourcescheduledocument:5:0">
  <DocumentIdentification v="1" />
  <DocumentVersion v="1" />
  <DocumentType v="A14" />
  <ProcessType v="A17" />
  <SenderIdentification v="44X-00000000004B" codingScheme="A01" />
  <SenderRole v="A05" />
```

eSett

2021-07-27

Public

10.10.2024

```

<ReceiverIdentification v="BRP" codingScheme="A01" />
<CreationDateTime v="2015-12-10T12:00Z" />
<TimePeriodCovered v="2014-01-01T00:00Z/2019-09-21T00:00Z" />
<Domain v="10Y1001A1001A91G" codingScheme="A01" />
<PlannedResourceTimeSeries>
  <TimeSeriesIdentification v="PP61" />
  <BusinessType v="A01" />
  <Product v="8716867000030" />
  <ConnectingArea v="MBA" codingScheme="A01" />
  <ResourceObject v="RO" codingScheme="A01" />
  <ResourceProvider v="BRP" codingScheme="A01" />
  <MeasurementUnit v="MWH" />
  <ObjectAggregation v="A06" />
  <Period>
    <TimeInterval v="2015-10-18T22:00Z/2015-12-09T23:00Z" />
    <Resolution v="P1D" />
    <Interval>
      <Pos v="1" />
      <Qty v="1" />
    </Interval>
    ...
    <Interval>
      <Pos v="52" />
      <Qty v="1" />
    </Interval>
  </Period>
</PlannedResourceTimeSeries>
</PlannedResourceScheduleDocument>

```

Request example

```

<soap:Envelope xmlns:soap="http://www.w3.org/2003/05/soap-envelope"
  xmlns:inf="http://www.basse.eu/information-service-1.0"
  xmlns:urn="urn:entsoe.eu:wgedi:components">
  <soap:Header/>

```

eSett

2021-07-27

Public

10.10.2024

```
<soap:Body>
  <inf:GetData>
    <inf:request DtdVersion="?" DtdRelease="?">

      <urn:DocumentIdentification v="PRPI-1"/>
      <urn:DocumentType v="A25"/>
      <urn:SenderIdentification v="BRP01" codingScheme="A01"/>
      <urn:SenderRole v="A08"/>
      <urn:ReceiverIdentification v=" " codingScheme="A01"/>
      <urn:ReceiverRole v="A05"/>
      <urn:CreationDateTime v="2015-01-21T18:00:00Z"/>

      <urn:RequestComponent>
        <urn:RequestedAttribute v="Dataflow"/>
        <urn:RequestedAttributeValue v="PRP" />
      </urn:RequestComponent>

      <urn:RequestComponent>
        <urn:RequestedAttribute v="TimeInterval"/>
        <urn:RequestedAttributeValue v="2014-01-01T00:00:00Z/2019-09-21T23:00:00Z" />
      </urn:RequestComponent>

      <urn:RequestComponent>
        <urn:RequestedAttribute v="TimeResolution"/>
        <urn:RequestedAttributeValue v="P1D" />
      </urn:RequestComponent>

      <urn:RequestComponent>
        <urn:RequestedAttribute v="MBA"/>
        <urn:RequestedAttributeValue v="FI1" codingScheme="A01"/>
      </urn:RequestComponent>

      <urn:RequestComponent>
        <urn:RequestedAttribute v="RegulationObject"/>
      </urn:RequestComponent>
    </inf:request>
  </inf:GetData>
</soap:Body>
```

eSett

2021-07-27

Public

10.10.2024

```

    <urn:RequestedAttributeValue v="RO01" codingScheme="A01"/>
  </urn:RequestComponent>

  </inf:request>
</inf:GetData>
</soap:Body>
</soap:Envelope>

```

3.1.3.9 Activated Reserves

RequestedAttribute	RequestedAttributeValue
"DataFlow"	"ACR"
"TimeResolution"	"P1Y" – for yearly aggregated data "P1M" – for monthly aggregated data "P7D" – for weekly aggregated data "P1D" – for daily aggregated data "PT1H" – for hourly data "PT15M" – for 15-minutes data
"TimeInterval"	YYYY-MM-DDTHH:MM:SSZ/YYYY-MM-DDTHH:MM:SSZ System will take into account also parts of the intervals. So for example if there are demanded monthly aggregated data for this interval: "2015-01-02T02:00:00Z/2015-02-01T02:00:00Z" system will return data for January 2015 and February 2015.
"BusinessType"	Business type is mandatory. Response may contain activated reserves of one business type only. Seek <i>NBS BRS</i> at Nordic Balance Settlement (NBS) – Ediel.org for Dependency matrix for different combinations you can request.
"ReasonCode"	
"Reason Code" 2 nd repetition Optional	2 nd Reason Code may be used to indicated balancing sub-services which use a combination of 2 nd Reason Code.
"RegulationObject" Optional	CODE – in v attribute CODING SCHEME – in CodingScheme attribute Code and Coding Scheme of desired Regulation Object.
"MBA" Optional	CODE – in v attribute CODING SCHEME – in CodingScheme attribute Code and Coding Scheme of desired MBA

eSett

2021-07-27

Public

10.10.2024

Response example

```
<?xml version="1.0" encoding="utf-8"?>
<ReserveAllocationResultDocument xmlns:xsi="http://www.w3.org/2001/XMLSchema-instance"
xmlns:xsd="http://www.w3.org/2001/XMLSchema"
xmlns="urn:ediel:org:neg:errp:reserveallocationresultdocument:1:0">
  <DocumentIdentification v="" />
  <DocumentVersion v="1" />
  <DocumentType v="A38" />
  <SenderIdentification v="44X-00000000004B" codingScheme="A01" />
  <SenderRole v="A05" />
  <ReceiverIdentification v="BRP" codingScheme="A01" />
  <ReceiverRole v="A08" />
  <CreationDateTime v="2015-12-10T12:00Z" />
  <ReserveBidTimeInterval v="2015-03-01T22:00Z/2015-11-02T22:00Z" />
  <Domain v="10Y1001A1001A91G" codingScheme="A01" />
  <AllocationTimeSeries>
    <TimeSeriesIdentification v="v1" />
    <TenderingParty v="BRP" codingScheme="A01" />
    <BusinessType v="A12" />
    <AcquiringArea v="MBA" codingScheme="A01" />
    <MeasureUnitQuantity v="MWH" />
    <Currency v="EUR" />
    <MeasureUnitPrice v="MWH" />
    <ReserveObject v="RO" codingScheme="A01" />
    <Direction v="A01" />
    <Period>
      <TimeInterval v="2015-10-20T22:00Z/2015-10-27T22:00Z" />
      <Resolution v="PT1H" />
      <Interval>
        <Pos v="1" />
        <Qty v="1" />
        <SettlementAmount v="1" />
      </Interval>
      ...
    </Interval>
```

eSett

2021-07-27

Public

10.10.2024

```

<Interval>
  <Pos v="168" />
  <Qty v="1" />
  <SettlementAmount v="1" />
</Interval>
</Period>
<Period>
  <TimeInterval v="2015-10-27T23:00Z/2015-11-02T22:00Z" />
  <Resolution v="PT1H" />
<Interval>
  <Pos v="1" />
  <Qty v="1" />
  <SettlementAmount v="1" />
</Interval>
  ...
<Interval>
  <Pos v="143" />
  <Qty v="1" />
  <SettlementAmount v="1" />
</Interval>
</Period>
<Reason>
  <ReasonCode v="Z30" />
</Reason>
</AllocationTimeSeries>
</ReserveAllocationResultDocument>

```

Request example

```

<soap:Envelope xmlns:soap="http://www.w3.org/2003/05/soap-envelope"
  xmlns:inf="http://www.basse.eu/information-service-1.0" xmlns:urn="urn:entsoe.eu:wgedi:components">
  <soap:Header/>
  <soap:Body>
    <inf:GetData>
      <inf:request DtdVersion="?" DtdRelease="?">

```

eSett

2021-07-27

Public

10.10.2024

```
<urn:DocumentIdentification v="1"/>
  <urn:DocumentType v="A25"/>
  <urn:SenderIdentification v="BSP01" codingScheme="A10"/>
  <urn:SenderRole v="A46"/>
  <urn:ReceiverIdentification v=" " codingScheme="A01"/>
  <urn:ReceiverRole v="A05"/>
  <urn:CreationDateTime v="2024-05-31T00:00:00Z"/>
  <urn:RequestComponent>
    <urn:RequestedAttribute v="Dataflow"/>
    <urn:RequestedAttributeValue v="ACR" />
  </urn:RequestComponent>
  <urn:RequestComponent>
    <urn:RequestedAttribute v="TimeInterval"/>
    <urn:RequestedAttributeValue v="2024-09-30T21:00:00Z/2024-10-01T21:00:00Z" />
  </urn:RequestComponent>
  <urn:RequestComponent>
    <urn:RequestedAttribute v="TimeResolution"/>
    <urn:RequestedAttributeValue v="PT15M" />
  </urn:RequestComponent>
  <urn:RequestComponent>
    <urn:RequestedAttribute v="BusinessType"/>
    <urn:RequestedAttributeValue v="A10" />
  </urn:RequestComponent>
  <urn:RequestComponent>
    <urn:RequestedAttribute v="ReasonCode"/>
    <urn:RequestedAttributeValue v="Z35" />
  </urn:RequestComponent>
  <urn:RequestComponent>
    <urn:RequestedAttribute v="ReasonCode"/>
    <urn:RequestedAttributeValue v="Z58" />
  </urn:RequestComponent>
</inf:request>
</inf:GetData>
```

eSett

2021-07-27

Public

10.10.2024

```
</soap:Body>
</soap:Envelope>
```

3.1.3.10 Imbalance Adjustment

RequestedAttribute	RequestedAttributeValue
"DataFlow"	"IBA"
"TimeResolution"	"P1Y" – for yearly aggregated data "P1M" – for monthly aggregated data "P7D" – for weekly aggregated data "P1D" – for daily aggregated data "PT1H" – for hourly data "PT15M" – for 15-minutes data
"TimeInterval"	YYYY-MM-DDTHH:MMZ/YYYY-MM-DDTHH:MMZ System will take into account also parts of the intervals. So for example if there are demanded monthly aggregated data for this interval: "2015-01-02T02:00Z/2015-02-01T02:00Z" system will return data for January 2015 and February 2015.
"RegulationObject" Optional	CODE – in v attribute CODING SCHEME – in CodingScheme attribute Code and Coding Scheme of desired Regulation Object.
"MBA" Optional	CODE – in v attribute CODING SCHEME – in CodingScheme attribute Code and Coding Scheme of desired MBA

Response example

```
<?xml version="1.0" encoding="utf-8"?>
<ReserveAllocationResultDocument xmlns:xsi="http://www.w3.org/2001/XMLSchema-instance"
xmlns:xsd="http://www.w3.org/2001/XMLSchema"
xmlns="urn:ediel.org:neg:errp:reserveallocationresultdocument:1:0">
  <DocumentIdentification v="" />
  <DocumentVersion v="1" />
  <DocumentType v="A38" />
  <SenderIdentification v="44X-00000000004B" codingScheme="A01" />
  <SenderRole v="A05" />
  <ReceiverIdentification v="BRP" codingScheme="A01" />
```

eSett

2021-07-27

Public

10.10.2024

```

<ReceiverRole v="A08" />
<CreationDateTime v="2015-12-10T12:00Z" />
<ReserveBidTimeInterval v="2015-09-01T00:00Z/2015-10-21T23:00Z" />
<Domain v="10Y1001A1001A91G" codingScheme="A01" />
<AllocationTimeSeries>
  <TimeSeriesIdentification v="IA61" />
  <TenderingParty v="BRP" codingScheme="A01" />
  <AcquiringArea v="MBA" codingScheme="A01" />
  <MeasureUnitQuantity v="MWH" />
  <Currency v="EUR" />
  <MeasureUnitPrice v="MWH" />
  <ReserveObject v="RO" codingScheme="A01" />
  <Direction v="A01" />
  <Period>
    <TimeInterval v="2015-09-01T00:00Z/2015-10-21T23:00Z" />
    <Resolution v="PT1H" />
    <Interval>
      <Pos v="1" />
      <Qty v="0" />
      <SettlementAmount v="0" />
    </Interval>
    ...
    <Interval>
      <Pos v="1223" />
      <Qty v="1" />
      <SettlementAmount v="1" />
    </Interval>
  </Period>
</AllocationTimeSeries>
</ReserveAllocationResultDocument>

```

Request example

```

<soap:Envelope xmlns:soap="http://www.w3.org/2003/05/soap-envelope"
xmlns:inf="http://www.basse.eu/information-service-1.0" xmlns:urn="urn:entsoe.eu:wgedi:components">
  <soap:Header/>

```

eSett

2021-07-27

Public

10.10.2024

```
<soap:Body>
  <inf:GetData>

    <inf:request >

      <urn:DocumentIdentification v="1"/>
      <urn:DocumentType v="A25"/>
      <urn:SenderIdentification v="BRP01" codingScheme="A01"/>
      <urn:SenderRole v="A08"/>
      <urn:ReceiverIdentification v=" " codingScheme="A01"/>
      <urn:ReceiverRole v="A05"/>
      <urn:CreationDateTime v="2015-01-21T18:00:00Z"/>

      <urn:RequestComponent>
        <urn:RequestedAttribute v="Dataflow"/>
        <urn:RequestedAttributeValue v="ImbalanceAdjustment" />
      </urn:RequestComponent>

      <urn:RequestComponent>
        <urn:RequestedAttribute v="TimeInterval"/>
        <urn:RequestedAttributeValue v="2015-09-01T00:00:00Z/2015-10-21T23:00:00Z" />
      </urn:RequestComponent>

      <urn:RequestComponent>
        <urn:RequestedAttribute v="TimeResolution"/>
        <urn:RequestedAttributeValue v="PT1H" />
      </urn:RequestComponent>

    </inf:request>
  </inf:GetData>
</soap:Body>
</soap:Envelope>
```

3.1.3.11 Prices

eSett

2021-07-27

Public

10.10.2024

RequestedAttribute	RequestedAttributeValue
"DataFlow"	"REP"
"TimeResolution"	<p>"PT1H" – for hourly data</p> <p>"PT15M" – for 15-minutes data</p> <p>15-minute data are available only for business period after 15MTP.</p> <p>If the PT1H is used for interval that contain 15-minute data (data for business period after the 15MTP), 15-minute data are aggregated with use of average (AVG) function into hours. This means that requested period can cover interval before and after the 15MTP in one request. For period before the 15MTP hourly data are used, for period after the 15MTP data are aggregated and provided in one response. AVG function is applied to all business types except B22. Business type B22 is not aggregated into hours from 15-minutes and is excluded from the response (not part of the response for business interval after the 15MTP).</p>
"TimeInterval"	<p>YYYY-MM-DDTHH:MMZ/YYYY-MM-DDTHH:MMZ</p> <p><i>Due to introduction of Single Balance Settlement model into the system certain business types will not be available for interval before the transition date (Z74, Z75). Some others will not be available after the transition date (B23, B24, B25). Transition date to Single Balance model is 31.10.2021</i></p>
"MBA" Optional	<p>CODE – in v attribute</p> <p>CODING SCHEME – in CodingScheme attribute</p> <p>Code and Coding Scheme of desired MBA</p>
"BusinessType"	<p>"A62" – stands for Spot Price</p> <p>"B23" – stands for Consumption Imbalance Price</p> <p>"B21" – stands for Balance Down Regulation Price</p> <p>"B20" – stands for Balance Up Regulation Price</p> <p>"B22" – stands for Main Direction</p> <p>"B24" – stands for Production Sales Imbalance Price</p> <p>"B25" – stands for Production Purchase Imbalance Price</p> <p>"Z74" – stands for Imbalance Sales Price</p> <p>"Z75" – stands for Imbalance Purchase Price</p> <p>"A06" – stands for Day-ahead NSL Price</p> <p>"A69" – stands for Intraday Auction Price</p>
<p><i>BusinessType can be listed in the request file multiple times. For example if market participant requests Spot Prices and Consumption Imbalance Prices then the BusinessType will be listed twice, first with "A62" value and second with "Z58" value.</i></p>	

eSett

2021-07-27

Public

10.10.2024

<p>“ContractType”</p> <p>Optional</p>	<p>“A14” – stands for Intraday 1st auction</p> <p>“A15” – stands for Intraday 2nd auction</p> <p>“A16” – stands for Intraday 3rd auction</p> <p>For any other business type than “A69” not used (omitted)</p>
<p>“Currency”</p>	<p>“EUR” – stands for EURO</p> <p>“NOK” – stands for Norwegian Krone</p> <p>“SEK” – stands for Swedish Krona</p> <p>“DKK” – stands for Danish krone</p>

Response example

```
<?xml version="1.0" encoding="utf-8"?>
<PublicationDocument xmlns:xsi="http://www.w3.org/2001/XMLSchema-instance"
xmlns:xsd="http://www.w3.org/2001/XMLSchema" xmlns="urn:ediel:org:neg:ecan:publicationdocument:1:0">
  <DocumentIdentification v="" />
  <DocumentVersion v="1" />
  <DocumentType v="A44" />
  <ProcessType v="A30" />
  <SenderIdentification v="44X-00000000004B" codingScheme="A01" />
  <SenderRole v="A05" />
  <ReceiverIdentification v="BRP" codingScheme="A01" />
  <ReceiverRole v="A08" />
  <CreationDateTime v="2015-12-10T12:00Z" />
  <PublicationTimeInterval v="2014-01-01T00:00Z/2019-09-21T23:00Z" />
  <Domain v="10Y1001A1001A91G" codingScheme="A01" />
  <PublicationTimeSeries>
    <TimeSeriesIdentification v="v1" />
    <BusinessType v="A62" />
    <InArea v="MBA" codingScheme="A01" />
    <OutArea v="MBA" codingScheme="A01" />
    <Currency v="EUR" />
    <MeasureUnitPrice v="MWH" />
  </PublicationTimeSeries>
  <Period>
    <TimeInterval v="2015-10-20T22:00Z/2015-10-27T22:00Z" />
    <Resolution v="PT1H" />
  </Period>
</PublicationDocument>
```


eSett

2021-07-27

Public

10.10.2024

```

<Interval>
  <Pos v="1" />
  <Price v="1" />
</Interval>
  ...
<Interval>
  <Pos v="360" />
  <Price v="1" />
</Interval>
</Period>
</PublicationTimeSeries>
</PublicationDocument>

```

Request example

```

<soap:Envelope xmlns:soap="http://www.w3.org/2003/05/soap-envelope"
xmlns:inf="http://www.basse.eu/information-service-1.0" xmlns:urn="urn:entsoe.eu:wgedi:components">
  <soap:Header/>
  <soap:Body>
    <inf:GetData>
      <inf:request DtdVersion="?" DtdRelease="?">
        <urn:DocumentIdentification v="1"/>
        <urn:DocumentType v="A25"/>
        <urn:SenderIdentification v="BRP01" codingScheme="A01"/>
        <urn:SenderRole v="A08"/>
        <urn:ReceiverIdentification v=" " codingScheme="A01"/>
        <urn:ReceiverRole v="A05"/>
        <urn:CreationDateTime v="2015-01-21T18:00:00Z"/>
        <urn:RequestComponent>
          <urn:RequestedAttribute v="Dataflow"/>
          <urn:RequestedAttributeValue v="Prices" />
        </urn:RequestComponent>
      </inf:request>
    </inf:GetData>
  </soap:Body>
</soap:Envelope>

```

10.10.2024

```
<urn:RequestComponent>
  <urn:RequestedAttribute v="TimeInterval"/>
  <urn:RequestedAttributeValue v="2014-01-01T00:00:00Z/2019-09-21T23:00:00Z" />
</urn:RequestComponent>

<urn:RequestComponent>
  <urn:RequestedAttribute v="TimeResolution"/>
  <urn:RequestedAttributeValue v="PT1H" />
</urn:RequestComponent>

<urn:RequestComponent>
  <urn:RequestedAttribute v="MBA"/>
  <urn:RequestedAttributeValue v="FI1" codingScheme="A01"/>
</urn:RequestComponent>

<urn:RequestComponent>
  <urn:RequestedAttribute v="BusinessType"/>
  <urn:RequestedAttributeValue v="A62" />
</urn:RequestComponent>

<urn:RequestComponent>
  <urn:RequestedAttribute v="Currency"/>
  <urn:RequestedAttributeValue v="EUR" />
</urn:RequestComponent>

</inf:request>
</inf:GetData>
</soap:Body>
</soap:Envelope>
```

3.1.3.12 Consumption Imbalance

eSett

2021-07-27

Public

10.10.2024

RequestedAttribute	RequestedAttributeValue
"DataFlow"	"CIM"
"TimeResolution"	<p>"P1Y" – for yearly aggregated data</p> <p>"P1M" – for monthly aggregated data</p> <p>"P7D" – for weekly aggregated data</p> <p>"P1D" – for daily aggregated data</p> <p>"PT1H", "PT60M" - for hourly data</p>
"TimeInterval"	<p>YYYY-MM-DDTHH:MMZ/YYYY-MM-DDTHH:MMZ</p> <p>System will take into account also parts of the intervals. So for example if there are demanded monthly aggregated data for this interval: "2015-01-02T02:00Z/2015-02-01T02:00Z" system will return data for January 2015 and February 2015.</p> <p>Only data for period before transition point (31.10.2021) will be sent (further data will not be available due to Single Balance Settlement introduction into the system).</p>
"BRP" Optional	<p>CODE – in v attribute</p> <p>CODING SCHEME – in CodingScheme attribute</p> <p>Code and Coding Scheme of desired BRP</p>
"MBA" Optional	<p>CODE – in v attribute</p> <p>CODING SCHEME – in CodingScheme attribute</p> <p>Code and Coding Scheme of desired MBA</p>
"Currency"	<p><i>ISO Code of desired currency (EUR, NOK, SEK)</i></p> <p><i>Please note that default currency for settlement is EUR, amounts are recalculated to NOK and SEK using ECB rate, which can cause that in conclusion invoiced amount in NOK and SEK can slightly differ from amount provided by this DF.</i></p>

Response example

```
<?xml version="1.0" encoding="utf-8"?>
<EnergyAccountReport xmlns:xsi="http://www.w3.org/2001/XMLSchema-instance"
xmlns:xsd="http://www.w3.org/2001/XMLSchema"
xmlns="urn:ediel:org:neg:esp:energyaccountreportddocument:1:0">
  <DocumentIdentification v="" />
  <DocumentVersion v="1" />
  <DocumentType v="A12" />
```

eSett

2021-07-27

Public

10.10.2024

```
<DocumentStatus v="A01" />
<ProcessType v="A06" />
<ClassificationType v="A02" />
<SenderIdentification v="44X-00000000004B" codingScheme="A01" />
<SenderRole v="A05" />
<ReceiverIdentification v="BRP" codingScheme="A01" />
<ReceiverRole v="A08" />
<DocumentDateTime v="2015-12-10T12:00Z" />
<AccountingPeriod v="2014-01-01T00:00Z/2019-09-21T00:00Z" />
<Domain v="10Y1001A1001A91G" codingScheme="A01" />
<AccountTimeSeries>
  <SendersTimeSeriesIdentification v="v1" />
  <BusinessType v="B15" />
  <Product v="8716867000030" />
  <ObjectAggregation v="A01" />
  <Area v="MBA" codingScheme="A01" />
  <Party v="BRP" codingScheme="A01" />
  <MeasurementUnit v="MWH" />
  <Currency v="EUR" />
  <Period>
    <TimeInterval v="2015-10-18T22:00Z/2015-12-10T23:00Z" />
    <Resolution v="P7D" />
    <AccountInterval>
      <Pos v="1" />
      <InQty v="0" />
      <OutQty v="0" />
      <SettlementAmount v="0" />
    </AccountInterval>
    ...
    <AccountInterval>
      <Pos v="31" />
      <InQty v="0" />
      <OutQty v="0" />
      <SettlementAmount v="0" />
    </AccountInterval>
  </Period>
</AccountTimeSeries>
```

eSett

2021-07-27

Public

10.10.2024

```

</AccountInterval>
</Period>
</AccountTimeSeries>
</EnergyAccountReport>

```

Request example

```

<soap:Envelope xmlns:soap="http://www.w3.org/2003/05/soap-envelope"
xmlns:inf="http://www.basse.eu/information-service-1.0" xmlns:urn="urn:entsoe.eu:wgedi:components">
  <soap:Header/>
  <soap:Body>
    <inf:GetData>

      <inf:request DtdVersion="?" DtdRelease="?">

        <urn:DocumentIdentification v="1"/>
        <urn:DocumentType v="A25"/>
        <urn:SenderIdentification v="BRP01" codingScheme="A01"/>
        <urn:SenderRole v="A08"/>
        <urn:ReceiverIdentification v=" " codingScheme="A01"/>
        <urn:ReceiverRole v="A05"/>
        <urn:CreationDateTime v="2015-01-21T18:00:00Z"/>

        <urn:RequestComponent>
          <urn:RequestedAttribute v="Dataflow"/>
          <urn:RequestedAttributeValue v="ConsumptionImbalance" />
        </urn:RequestComponent>

        <urn:RequestComponent>
          <urn:RequestedAttribute v="TimeInterval"/>
          <urn:RequestedAttributeValue v="2014-01-01T00:00:00Z/2019-09-21T23:00:00Z" />
        </urn:RequestComponent>

        <urn:RequestComponent>
          <urn:RequestedAttribute v="TimeResolution"/>
          <urn:RequestedAttributeValue v="P7D" />

```

eSett

2021-07-27

Public

10.10.2024

```

</urn:RequestComponent>

<urn:RequestComponent>
  <urn:RequestedAttribute v="MBA"/>
  <urn:RequestedAttributeValue v="NO1" codingScheme="A01"/>
</urn:RequestComponent>

<urn:RequestComponent>
  <urn:RequestedAttribute v="BRP"/>
  <urn:RequestedAttributeValue v="BRP01" codingScheme="A01"/>
</urn:RequestComponent>

<urn:RequestComponent>
  <urn:RequestedAttribute v="Currency"/>
  <urn:RequestedAttributeValue v="EUR" />
</urn:RequestComponent>

</inf:request>
</inf:GetData>
</soap:Body>
</soap:Envelope>

```

3.1.3.13 Production Imbalance

RequestedAttribute	RequestedAttributeValue
"DataFlow"	"PIM"
"TimeResolution"	"P1Y" – for yearly aggregated data "P1M" – for monthly aggregated data "P7D" – for weekly aggregated data "P1D" – for daily aggregated data "PT1H", "PT60M" - for hourly data
"TimeInterval"	YYYY-MM-DDTHH:MMZ/YYYY-MM-DDTHH:MMZ System will take into account also parts of the intervals. So for example if there are demanded monthly aggregated data for this interval: "2015-01-

eSett

2021-07-27

Public

10.10.2024

	<p>02T02:00Z/2015-02-01T02:00Z" system will return data for January 2015 and February 2015.</p> <p>Only data for period before transition point (31.10.2021) will be sent (further data will not be available due to Single Balance Settlement introduction into the system).</p>
<p>"BRP" Optional</p>	<p>CODE – in v attribute CODING SCHEME – in CodingScheme attribute Code and Coding Scheme of desired BRP</p>
<p>"MBA" Optional</p>	<p>CODE – in v attribute CODING SCHEME – in CodingScheme attribute Code and Coding Scheme of desired MBA</p>
<p>"Currency"</p>	<p><i>ISO Code of desired currency (EUR, NOK, SEK)</i></p> <p><i>Please note that default currency for settlement is EUR, amounts are recalculated to NOK and SEK using ECB rate, which can cause that in conclusion invoiced amount in NOK and SEK can slightly differ from amount provided by this DF.</i></p>

Response example

```
<?xml version="1.0" encoding="utf-8"?>
<EnergyAccountReport xmlns:xsi="http://www.w3.org/2001/XMLSchema-instance"
xmlns:xsd="http://www.w3.org/2001/XMLSchema"
xmlns="urn:ediel.org:neg:esp:energyaccountreportddocument:1:0">
  <DocumentIdentification v="" />
  <DocumentVersion v="1" />
  <DocumentType v="A12" />
  <DocumentStatus v="A01" />
  <ProcessType v="A06" />
  <ClassificationType v="A02" />
  <SenderIdentification v="44X-00000000004B" codingScheme="A01" />
  <SenderRole v="A05" />
  <ReceiverIdentification v="BRP" codingScheme="A01" />
  <ReceiverRole v="A08" />
  <DocumentDateTime v="2015-12-10T12:00Z" />
  <AccountingPeriod v="2015-01-24T00:00Z/2016-08-21T23:00Z" />
  <Domain v="10Y1001A1001A91G" codingScheme="A01" />
```

eSett

2021-07-27

Public

10.10.2024

```

<AccountTimeSeries>
  <SendersTimeSeriesIdentification v="v1" />
  <BusinessType v="B14" />
  <Product v="8716867000030" />
  <ObjectAggregation v="A01" />
  <Area v="MBA" codingScheme="A01" />
  <Party v="BRP" codingScheme="A01" />
  <MeasurementUnit v="MWH" />
  <Currency v="EUR" />
  <Period>
    <TimeInterval v="2015-08-30T22:00Z/2015-12-09T23:00Z" />
    <Resolution v="PT1H" />
    <AccountInterval>
      <Pos v="1" />
      <InQty v="0" />
      <OutQty v="0" />
      <SettlementAmount v="0" />
    </AccountInterval>
    ...
    <AccountInterval>
      <Pos v="744" />
      <InQty v="0" />
      <OutQty v="0" />
      <SettlementAmount v="0" />
    </AccountInterval>
  </Period>
</AccountTimeSeries>
</EnergyAccountReport>

```

Request example

```

<soap:Envelope xmlns:soap="http://www.w3.org/2003/05/soap-envelope"
xmlns:inf="http://www.basse.eu/information-service-1.0" xmlns:urn="urn:entsoe.eu:wgedi:components">
  <soap:Header/>
  <soap:Body>
    <inf:GetData>

```


10.10.2024

```
<inf:request DtdVersion="?" DtdRelease="?">

  <urn:DocumentIdentification v="1"/>
  <urn:DocumentType v="A25"/>
  <urn:SenderIdentification v="BRP01" codingScheme="A01"/>
  <urn:SenderRole v="A08"/>
  <urn:ReceiverIdentification v=" " codingScheme="A01"/>
  <urn:ReceiverRole v="A05"/>
  <urn:CreationDateTime v="2015-01-21T18:00:00Z"/>

  <urn:RequestComponent>
    <urn:RequestedAttribute v="Dataflow"/>
    <urn:RequestedAttributeValue v="ProductionImbalance" />
  </urn:RequestComponent>

  <urn:RequestComponent>
    <urn:RequestedAttribute v="TimeInterval"/>
    <urn:RequestedAttributeValue v="2015-10-24T00:00:00Z/2015-11-21T23:00:00Z" />
  </urn:RequestComponent>

  <urn:RequestComponent>
    <urn:RequestedAttribute v="TimeResolution"/>
    <urn:RequestedAttributeValue v="PT1H" />
  </urn:RequestComponent>

  <urn:RequestComponent>
    <urn:RequestedAttribute v="Currency"/>
    <urn:RequestedAttributeValue v="EUR" codingScheme="A01"/>
  </urn:RequestComponent>

</inf:request>
</inf:GetData>
</soap:Body>
```

eSett

2021-07-27

Public

10.10.2024

</soap:Envelope>

3.1.3.14 Imbalance

RequestedAttribute	RequestedAttributeValue
"DataFlow"	"IM"
"TimeResolution"	<p>"P1Y" – for yearly aggregated data</p> <p>"P1M" – for monthly aggregated data</p> <p>"P7D" – for weekly aggregated data</p> <p>"P1D" – for daily aggregated data</p> <p>"PT1H" – for hourly data</p> <p>"PT15M" – for 15-minutes data</p>
"TimeInterval"	<p>YYYY-MM-DDTHH:MM:SSZ/YYYY-MM-DDTHH:MM:SSZ</p> <p>System will take into account also parts of the intervals. So for example if there are demanded monthly aggregated data for this interval: "2015-01-02T02:00:00Z/2015-02-01T02:00:00Z" system will return data for January 2015 and February 2015.</p> <p>Only data for period after Singlebalance transition point will be sent (previous data will not be available yet).</p>
"BRP" Optional	<p>CODE – in v attribute</p> <p>CODING SCHEME – in CodingScheme attribute</p> <p>Code and Coding Scheme of desired BRP</p>
"MBA" Optional	<p>CODE – in v attribute</p> <p>CODING SCHEME – in CodingScheme attribute</p> <p>Code and Coding Scheme of desired MBA</p>
"Currency"	<p><i>ISO Code of desired currency (EUR, NOK, SEK)</i></p> <p><i>Please note that default currency for settlement is EUR, amounts are recalculated to NOK and SEK using ECB rate, which can cause that in conclusion invoiced amount in NOK and SEK can slightly differ from amount provided by this DF.</i></p>

Response example

```
<?xml version="1.0" encoding="utf-8"?>
<EnergyAccountReport xmlns:xsi="http://www.w3.org/2001/XMLSchema-instance"
xmlns:xsd="http://www.w3.org/2001/XMLSchema"
xmlns="urn:ediel.org:neg:esp:energyaccountreportdocument:1:0">
  <DocumentIdentification v="" />
  <DocumentVersion v="1" />
```

eSett

2021-07-27

Public

10.10.2024

```
<DocumentType v="A12" />
<DocumentStatus v="A01" />
<ProcessType v="A06" />
<ClassificationType v="A02" />
<SenderIdentification v="44X-00000000004B" codingScheme="A01" />
<SenderRole v="A05" />
<ReceiverIdentification v="BRP" codingScheme="A01" />
<ReceiverRole v="A08" />
<DocumentDateTime v="2015-12-10T12:00Z" />
<AccountingPeriod v="2015-01-24T00:00Z/2016-08-21T23:00Z" />
<Domain v="10Y1001A1001A91G" codingScheme="A01" />
<AccountTimeSeries>
  <SendersTimeSeriesIdentification v="v1" />
  <BusinessType v="B14" />
  <Product v="8716867000030" />
  <ObjectAggregation v="A01" />
  <Area v="MBA" codingScheme="A01" />
  <Party v="BRP" codingScheme="A01" />
  <MeasurementUnit v="MWH" />
  <Currency v="EUR" />
  <Period>
    <TimeInterval v="2015-08-30T22:00Z/2015-09-21T23:00Z" />
    <Resolution v=" PT1H" />
    <AccountInterval>
      <Pos v="1" />
        <InQty v="0" />
        <OutQty v="0" />
        <SettlementAmount v="0" />
      </AccountInterval>
    ...
    <AccountInterval>
      <Pos v="529" />
      <InQty v="0" />
      <OutQty v="0" />
    </AccountInterval>
  </Period>
</AccountTimeSeries>
```

eSett

2021-07-27

Public

10.10.2024

```
<SettlementAmount v="0" />
</AccountInterval>
</Period>
</AccountTimeSeries>
</EnergyAccountReport>
```

Request example

```
<soap:Envelope xmlns:soap="http://www.w3.org/2003/05/soap-envelope"
xmlns:inf="http://www.basse.eu/information-service-1.0" xmlns:urn="urn:entsoe.eu:wgedi:components">
<soap:Header/>
<soap:Body>
<inf:GetData>

<inf:request >

<urn:DocumentIdentification v="1"/>
<urn:DocumentType v="A12"/>
<urn:DocumentStatus v="A01"/>
<urn:ProcessType v="A06"/>
<urn:ClassificationType v="A02"/>
<urn:SenderIdentification v="" codingScheme=""/>
<urn:SenderRole v="A05"/>
<urn:ReceiverIdentification v="" codingScheme=""/>
<urn:ReceiverRole v="A08"/>
<urn:CreationDateTime v=""/>
<urn:Domain v="" codingScheme=""/>

<urn:RequestComponent>
<urn:RequestedAttribute v="Dataflow"/>
<urn:RequestedAttributeValue v="IM" />
</urn:RequestComponent>

<urn:RequestComponent>
```

eSett

2021-07-27

Public

10.10.2024

```

    <urn:RequestedAttribute v="TimeInterval"/>
    <urn:RequestedAttributeValue v="2015-10-24T00:00:00Z/2015-11-21T23:00:00Z" />
  </urn:RequestComponent>

  <urn:RequestComponent>
    <urn:RequestedAttribute v="TimeResolution"/>
    <urn:RequestedAttributeValue v="PT1H" />
  </urn:RequestComponent>

  <urn:RequestComponent>
    <urn:RequestedAttribute v="Currency"/>
    <urn:RequestedAttributeValue v="EUR" />
  </urn:RequestComponent>

  </inf:request>
</inf:GetData>
</soap:Body>
</soap:Envelope>

```

3.1.3.15 MGA Imbalance

RequestedAttribute	RequestedAttributeValue
"DataFlow"	"MIM"
"TimeResolution"	"P1Y" – for yearly aggregated data "P1M" – for monthly aggregated data "P7D" – for weekly aggregated data "P1D" – for daily aggregated data "PT1H" – for hourly data "PT15M" – for 15-minutes data
"TimeInterval"	YYYY-MM-DDTHH:MMZ/YYYY-MM-DDTHH:MMZ System will take into account also parts of the intervals. So for example if there are demanded monthly aggregated data for this interval: "2015-01-02T02:00Z/2015-02-01T02:00Z" system will return data for January 2015 and February 2015.

eSett

2021-07-27

Public

10.10.2024

<p>“MGA”</p> <p>Optional</p>	<p>CODE – in v attribute</p> <p>CODING SCHEME – in CodingScheme attribute</p> <p>Code and Coding Scheme of desired MGA</p>
------------------------------	--

Response example

```
<?xml version="1.0" encoding="utf-8"?>
<EnergyAccountReport xmlns:xsi="http://www.w3.org/2001/XMLSchema-instance"
xmlns:xsd="http://www.w3.org/2001/XMLSchema"
xmlns="urn:ediel.org:neg:esp:energyaccountreportdocument:1:0">
  <DocumentIdentification v="" />
  <DocumentVersion v="1" />
  <DocumentType v="A12" />
  <DocumentStatus v="A01" />
  <ProcessType v="A06" />
  <ClassificationType v="A02" />
  <SenderIdentification v="44X-00000000004B" codingScheme="A01" />
<SenderRole v="A05" />
  <ReceiverIdentification v="BRP" codingScheme="A01" />
  <ReceiverRole v="A08" />
  <DocumentDateTime v="2015-12-10T12:00Z" />
  <AccountingPeriod v="2014-09-01T00:00Z/2015-09-21T23:00Z" />
  <Domain v="10Y1001A1001A91G" codingScheme="A01" />
  <AccountTimeSeries>
    <SendersTimeSeriesIdentification v="v1" />
    <BusinessType v="B29" />
    <Product v="8716867000030" />
    <ObjectAggregation v="A01" />
    <Area v="MGA" codingScheme="A01" />
    <Party v="BRP" codingScheme="A01" />
    <MeasurementUnit v="MWH" />
    <Period>
      <TimeInterval v="2015-08-30T22:00Z/2015-09-21T23:00Z" />
      <Resolution v="PT1H" />
    </Period>
    <AccountInterval>
```

eSett

2021-07-27

Public

10.10.2024

```

    <Pos v="1" />
    <InQty v="0" />
    <OutQty v="0" />
  </AccountInterval>
  ...
  <AccountInterval>
    <Pos v="529" />
    <InQty v="0" />
    <OutQty v="0" />
  </AccountInterval>
</Period>
</AccountTimeSeries>
</EnergyAccountReport>

```

Request example

```

<soap:Envelope xmlns:soap="http://www.w3.org/2003/05/soap-envelope"
xmlns:inf="http://www.basse.eu/information-service-1.0" xmlns:urn="urn:entsoe.eu:wgedi:components">
  <soap:Header/>
  <soap:Body>
    <inf:GetData>

      <inf:request DtdVersion="?" DtdRelease="?">

        <urn:DocumentIdentification v="1"/>
        <urn:DocumentType v="A25"/>
        <urn:SenderIdentification v="DSO01" codingScheme="A01"/>
        <urn:SenderRole v="A18"/>
        <urn:ReceiverIdentification v=" " codingScheme="A01"/>
        <urn:ReceiverRole v="A05"/>
        <urn:CreationDateTime v="2015-01-21T18:00:00Z"/>

        <urn:RequestComponent>
          <urn:RequestedAttribute v="Dataflow"/>
          <urn:RequestedAttributeValue v="MIM" />
        </urn:RequestComponent>
      </inf:request>
    </inf:GetData>
  </soap:Body>
</soap:Envelope>

```

eSett

2021-07-27

Public

10.10.2024

```

<urn:RequestComponent>
  <urn:RequestedAttribute v="TimeInterval"/>
  <urn:RequestedAttributeValue v="2015-08-10T00:00:00Z/2015-11-21T23:00:00Z" />
</urn:RequestComponent>

<urn:RequestComponent>
  <urn:RequestedAttribute v="TimeResolution"/>
  <urn:RequestedAttributeValue v="PT1H" />
</urn:RequestComponent>

</inf:request>
</inf:GetData>
</soap:Body>
</soap:Envelope>

```

3.1.3.16 Production per Production Unit Type and MGA

RequestedAttribute	RequestedAttributeValue
"DataFlow"	"GENERIC"
"DocumentType"	"PROD_MGA_PUT"
"SenderIdentification"	TSO Code / Coding Scheme
"SenderRole"	A04
"TimeResolution"	"PT1H" – for hourly data "PT15M" – for 15-minutes data
"TimeInterval"	YYYY-MM-DDTHH:MM:SSZ/YYYY-MM-DDTHH:MM:SSZ System will take into account also parts of the intervals. So for example if there are demanded monthly aggregated data for this interval: "2015-01-02T02:00:00Z/2015-02-01T02:00:00Z" system will return data for January 2015 and February 2015.
"MGA" Optional	CODE – in v attribute CODING SCHEME – in Coding Scheme attribute Code and Coding Scheme of desired MGA
"PU_TYPE" Optional	"B14" Nuclear "B16" Solar

eSett

2021-07-27

Public

10.10.2024

	<p>“B20” Other production “Z04”, “B37” Thermal “Z05”, “B19” Wind onshore “B18” Wind offshore “B25” Energy storage “Z06”, “B31” Hydro</p> <p>Several PU types currently use local Z-codes as their asset type in the XML. These Z-codes will be replaced by standard codes i.e. ‘B37’ instead of ‘Z04’. Old Z-codes will be in use approximately till May ’25.</p>
--	---

XML snippet example

eSett

2021-07-27

Public

10.10.2024

```
<DocumentIdentification v="51efd752c3574b9caf98a1a7f0de0188" />
<DocumentType v="PROD_MGA_PUT_HOUR " />
<SenderIdentification v="44X-00000000004B" codingScheme="A01" />
<SenderRole v="A05" />
<ReceiverIdentification v="10X1001A1001A38Y" codingScheme="EIC" />
<ReceiverRole v="A04" />
<CreationDateTime v="2017-02-06T14:00:16Z" />
<DocumentTimeInterval v="2017-02-01T22:00Z/2017-02-10T23:00Z" />
<TimeSeries>
  <TimeSeriesIdentification v="97e187e7628646d8901a5a26141fff37" />
  <BusinessDimensions>
    <BusinessDimension name="MGA" codingScheme="EIC" v="MGA11" />
    <BusinessDimension name="PU_TYPE" v="Z05" />
  </BusinessDimensions>
  <Period>
    <TimeInterval v="2017-02-02T23:00Z/2017-02-05T00:00Z" />
    <Resolution v="PT1H" />
    <Interval>
      <Pos v="1" />
      <Value name="Q" v="1005" />
    </Interval>
  </Period>
</TimeSeries>
```

Request example

```
<soap:Envelope xmlns:soap="http://www.w3.org/2003/05/soap-envelope"
xmlns:inf="http://www.basse.eu/information-service-1.0" xmlns:urn="urn:entsoe.eu:wgedi:components">
  <soap:Header/>
  <soap:Body>
```

10.10.2024

```
<inf:GetData>

  <inf:request >

    <urn:DocumentIdentification v=""/>
    <urn:DocumentType v="PROD_MGA_PUT_HOUR"/>
    <urn:SenderIdentification v="" codingScheme=""/>
    <urn:SenderRole v="A04"/>
    <urn:ReceiverIdentification v="" codingScheme=""/>
    <urn:ReceiverRole v="A04"/>
    <urn:CreationDateTime v=""/>

    <urn:RequestComponent>
      <urn:RequestedAttribute v="Dataflow"/>
      <urn:RequestedAttributeValue v="GENERIC" />
    </urn:RequestComponent>

    <urn:RequestComponent>
      <urn:RequestedAttribute v="DocumentType"/>
      <urn:RequestedAttributeValue v="PROD_MGA_PUT_HOUR" />

    </urn:RequestComponent>

  </urn:RequestComponent>

  <urn:RequestComponent>
    <urn:RequestedAttribute v="TimeResolution"/>
    <urn:RequestedAttributeValue v="PT1H" />
  </urn:RequestComponent>

  <urn:RequestComponent>
    <urn:RequestedAttribute v="TimeInterval"/>
    <urn:RequestedAttributeValue v=" YYYY-MM-DDTHH:MM:SSZ/YYYY-MM-DDTHH:MM:SSZ" />

  </urn:RequestComponent>

</inf:request >

</inf:GetData>
```

eSett

2021-07-27

Public

10.10.2024

```

</urn:RequestComponent>

</inf:request>
</inf:GetData>
</soap:Body>
</soap:Envelope>

```

3.1.3.17 MGA-MBA Relations

Parameter	Mandatory	Value
"DataFlow"	Yes	"ARE"
"TimeInterval"	No	YYYY-MM-DDTHH:MM:SSZ/YYYY-MM-DDTHH:MM:SSZ If time interval is set in the request then only MGA-MBA relations valid sometime within this interval are selected. If no time interval is set then all relations (also historical & future) are returned.
"Country"	Yes	Country ISO code – in v attribute Permitted values: <ul style="list-style-type: none"> • FI • SE • NO <i>Coding Scheme attribute is empty</i>

Response example

```

<NEGAreaSpecificationDocument
xsi:schemaLocation="urn:ediel.org:neg:masterdata:areaspecificationdocument:1:0 urn-ediel-org-neg-masterdata-
areaspecificationdocument-1-0.xsd" xmlns:xsd="http://www.w3.org/2001/XMLSchema"
xmlns:xsi="http://www.w3.org/2001/XMLSchema-instance"
xmlns="urn:ediel.org:neg:masterdata:areaspecificationdocument:1:0">
  <DocumentIdentification v="INFS-AREO-1" />
  <DocumentType v="Z11" />
  <ProcessType v="Z07" />
  <SenderIdentification v="44X-00000000004B" codingScheme="A01" />
  <SenderRole v="A05" />
  <ReceiverIdentification v="BRP10" codingScheme="A01" />
  <ReceiverRole v="A08" />
  <CreationDateTime v="2018-10-17T11:36:10Z" />

```

eSett

2021-07-27

Public

10.10.2024

```
<ValidityPeriod>
  <ValidityStart v="2015-08-31T22:00:00Z" />
  <ValidityEnd v="2026-12-31T23:00:00Z" />
  <AreaSpecificationDetails>
    <AreaIdentification v="10Y1001A1001A48H" codingScheme="A01" />
    <TypeOfArea v="Z01" />
    <RelatedArea>
      <AreaIdentification v="DF_MGA004" codingScheme="NFI" />
      <TypeOfArea v="Z02" />
    </RelatedArea>
    <RelatedArea>
      <AreaIdentification v="DF_MGA001" codingScheme="A01" />
      <TypeOfArea v="Z02" />
    </RelatedArea>
    <RelatedArea>
      <AreaIdentification v="DF_MGA002" codingScheme="A01" />
      <TypeOfArea v="Z02" />
    </RelatedArea>
    <RelatedArea>
      <AreaIdentification v="DF_MGA005" codingScheme="NSE" />
      <TypeOfArea v="Z02" />
    </RelatedArea>
    <RelatedArea>
      <AreaIdentification v="DF_MGA006" codingScheme="NNO" />
      <TypeOfArea v="Z02" />
    </RelatedArea>
    <RelatedArea>
      <AreaIdentification v="DF_MGA003" codingScheme="A10" />
      <TypeOfArea v="Z02" />
    </RelatedArea>
    <RelatedArea>
      <AreaIdentification v="DF_MGA007" codingScheme="NDK" />
      <TypeOfArea v="Z02" />
    </RelatedArea>
  </AreaSpecificationDetails>
</ValidityPeriod>
```

eSett

2021-07-27

Public

10.10.2024

```
</AreaSpecificationDetails>
</ValidityPeriod>
<ValidityPeriod>
  <ValidityStart v="2014-12-31T23:00:00Z" />
  <ValidityEnd v="2026-12-31T23:00:00Z" />
  <AreaSpecificationDetails>
    <AreaIdentification v="10YNO-4-----9" codingScheme="A01" />
    <TypeOfArea v="Z01" />
    <RelatedArea>
      <AreaIdentification v="MGA16" codingScheme="NFI" />
      <TypeOfArea v="Z02" />
    </RelatedArea>
    <RelatedArea>
      <AreaIdentification v="MGA17" codingScheme="NFI" />
      <TypeOfArea v="Z02" />
    </RelatedArea>
    <RelatedArea>
      <AreaIdentification v="MGA11" codingScheme="A01" />
      <TypeOfArea v="Z02" />
    </RelatedArea>
    <RelatedArea>
      <AreaIdentification v="MGA13" codingScheme="A01" />
      <TypeOfArea v="Z02" />
    </RelatedArea>
    <RelatedArea>
      <AreaIdentification v="MGA12" codingScheme="A01" />
      <TypeOfArea v="Z02" />
    </RelatedArea>
  </AreaSpecificationDetails>
  <AreaSpecificationDetails>
    <AreaIdentification v="10YNO-3-----J" codingScheme="A01" />
    <TypeOfArea v="Z01" />
    <RelatedArea>
      <AreaIdentification v="MGA18" codingScheme="A01" />
```

eSett

2021-07-27

Public

10.10.2024

```
<TypeOfArea v="Z02" />
</RelatedArea>
<RelatedArea>
  <AreaIdentification v="MGA14" codingScheme="A01" />
  <TypeOfArea v="Z02" />
</RelatedArea>
<RelatedArea>
  <AreaIdentification v="MGA15" codingScheme="A01" />
  <TypeOfArea v="Z02" />
</RelatedArea>
</AreaSpecificationDetails>
<AreaSpecificationDetails>
  <AreaIdentification v="10YNO-1-----2" codingScheme="A01" />
  <TypeOfArea v="Z01" />
  <RelatedArea>
    <AreaIdentification v="MGA05" codingScheme="A01" />
    <TypeOfArea v="Z02" />
  </RelatedArea>
</AreaSpecificationDetails>
<AreaSpecificationDetails>
  <AreaIdentification v="10YNO-2-----T" codingScheme="A01" />
  <TypeOfArea v="Z01" />
  <RelatedArea>
    <AreaIdentification v="MGA06" codingScheme="A01" />
    <TypeOfArea v="Z02" />
  </RelatedArea>
</AreaSpecificationDetails>
</ValidityPeriod>
<ValidityPeriod>
  <ValidityStart v="2015-04-29T22:00:00Z" />
  <ValidityEnd v="2026-12-31T23:00:00Z" />
  <AreaSpecificationDetails>
    <AreaIdentification v="10YNO-1-----2" codingScheme="A01" />
    <TypeOfArea v="Z01" />
```

eSett

2021-07-27

Public

10.10.2024

```
<RelatedArea>
  <AreaIdentification v="MR_MGA202" codingScheme="A01" />
  <TypeOfArea v="Z02" />
</RelatedArea>
</AreaSpecificationDetails>
<AreaSpecificationDetails>
  <AreaIdentification v="10Y1001A1001A48H" codingScheme="A01" />
  <TypeOfArea v="Z01" />
  <RelatedArea>
    <AreaIdentification v="MR_MGA203" codingScheme="A01" />
    <TypeOfArea v="Z02" />
  </RelatedArea>
</AreaSpecificationDetails>
</ValidityPeriod>
<ValidityPeriod>
  <ValidityStart v="2015-12-31T23:00:00Z" />
  <ValidityEnd v="2026-12-31T23:00:00Z" />
  <AreaSpecificationDetails>
    <AreaIdentification v="10YNO-3-----J" codingScheme="A01" />
    <TypeOfArea v="Z01" />
    <RelatedArea>
      <AreaIdentification v="SC_MGA104" codingScheme="A01" />
      <TypeOfArea v="Z02" />
    </RelatedArea>
    <RelatedArea>
      <AreaIdentification v="MGA08" codingScheme="A01" />
      <TypeOfArea v="Z02" />
    </RelatedArea>
    <RelatedArea>
      <AreaIdentification v="MGA07" codingScheme="A01" />
      <TypeOfArea v="Z02" />
    </RelatedArea>
  </AreaSpecificationDetails>
<AreaSpecificationDetails>
```


eSett

2021-07-27

Public

10.10.2024

```
<AreaIdentification v="10YNO-4-----9" codingScheme="A01" />
<TypeOfArea v="Z01" />
<RelatedArea>
  <AreaIdentification v="SC_MGA103" codingScheme="A01" />
  <TypeOfArea v="Z02" />
</RelatedArea>
</AreaSpecificationDetails>
</ValidityPeriod>
<ValidityPeriod>
  <ValidityStart v="2015-04-12T22:00:00Z" />
  <ValidityEnd v="2026-12-31T23:00:00Z" />
  <AreaSpecificationDetails>
    <AreaIdentification v="10Y1001A1001A48H" codingScheme="A01" />
    <TypeOfArea v="Z01" />
    <RelatedArea>
      <AreaIdentification v="SC_MGA21" codingScheme="A01" />
      <TypeOfArea v="Z02" />
    </RelatedArea>
    <RelatedArea>
      <AreaIdentification v="SC_MGA12" codingScheme="A01" />
      <TypeOfArea v="Z02" />
    </RelatedArea>
  </AreaSpecificationDetails>
  <AreaSpecificationDetails>
    <AreaIdentification v="10YNO-1-----2" codingScheme="A01" />
    <TypeOfArea v="Z01" />
    <RelatedArea>
      <AreaIdentification v="TP_MGA06" codingScheme="A01" />
      <TypeOfArea v="Z02" />
    </RelatedArea>
    <RelatedArea>
      <AreaIdentification v="TP_MGA13" codingScheme="A01" />
      <TypeOfArea v="Z02" />
    </RelatedArea>
  </AreaSpecificationDetails>
</AreaSpecificationDetails>
```

eSett

2021-07-27

Public

10.10.2024

```
<RelatedArea>
  <AreaIdentification v="TP_MGA10" codingScheme="A01" />
  <TypeOfArea v="Z02" />
</RelatedArea>
</AreaSpecificationDetails>
<AreaSpecificationDetails>
  <AreaIdentification v="10YNO-2-----T" codingScheme="A01" />
  <TypeOfArea v="Z01" />
  <RelatedArea>
    <AreaIdentification v="SC_MGA11" codingScheme="A01" />
    <TypeOfArea v="Z02" />
  </RelatedArea>
  <RelatedArea>
    <AreaIdentification v="SC_MGA20" codingScheme="A01" />
    <TypeOfArea v="Z02" />
  </RelatedArea>
</AreaSpecificationDetails>
</ValidityPeriod>
<ValidityPeriod>
  <ValidityStart v="2015-10-29T23:00:00Z" />
  <ValidityEnd v="2026-12-31T23:00:00Z" />
  <AreaSpecificationDetails>
    <AreaIdentification v="10YNO-2-----T" codingScheme="A01" />
    <TypeOfArea v="Z01" />
    <RelatedArea>
      <AreaIdentification v="MR_MGA201" codingScheme="A01" />
      <TypeOfArea v="Z02" />
    </RelatedArea>
  </AreaSpecificationDetails>
</ValidityPeriod>
<ValidityPeriod>
  <ValidityStart v="2015-11-19T23:00:00Z" />
  <ValidityEnd v="2026-12-31T23:00:00Z" />
  <AreaSpecificationDetails>
```

eSett

2021-07-27

Public

10.10.2024

```

<AreaIdentification v="10YNO-4-----9" codingScheme="A01" />
<TypeOfArea v="Z01" />
<RelatedArea>
  <AreaIdentification v="MGA_RUN" codingScheme="A01" />
  <TypeOfArea v="Z02" />
</RelatedArea>
</AreaSpecificationDetails>
<AreaSpecificationDetails>
  <AreaIdentification v="10YNO-2-----T" codingScheme="A01" />
  <TypeOfArea v="Z01" />
  <RelatedArea>
    <AreaIdentification v="MGA_NL1" codingScheme="A01" />
    <TypeOfArea v="Z02" />
  </RelatedArea>
  <RelatedArea>
    <AreaIdentification v="MGA_DK1N" codingScheme="A01" />
    <TypeOfArea v="Z02" />
  </RelatedArea>
</AreaSpecificationDetails>
</ValidityPeriod>
</NEGAreaSpecificationDocument>

```

Request example

```

<soap:Envelope xmlns:soap="http://www.w3.org/2003/05/soap-envelope"
xmlns:inf="http://www.basse.eu/information-service-1.0" xmlns:urn="urn:entsoe.eu:wgedi:components">
<soap:Header/>
<soap:Body>
  <inf:GetData>

    <inf:request >

      <urn:DocumentIdentification v=""/>
      <urn:DocumentType v="Z11"/>
      <urn:ProcessType v="Z07"/>
    
```

eSett

2021-07-27

Public

10.10.2024

```

<urn:SenderIdentification v="" codingScheme=""/>
<urn:SenderRole v="A05"/>
<urn:ReceiverIdentification v="" codingScheme=""/>
<urn:ReceiverRole v="A26, A04, A08, A12"/>
<urn:CreationDateTime v=""/>

<urn:RequestComponent>
  <urn:RequestedAttribute v="Dataflow"/>
  <urn:RequestedAttributeValue v="ARE" />
</urn:RequestComponent>

<urn:RequestComponent>
  <urn:RequestedAttribute v="TimeInterval"/>
  <urn:RequestedAttributeValue v="2015-10-24T00:00:00Z/2015-11-21T23:00:00Z" />

</urn:RequestComponent>

<urn:RequestComponent>
  <urn:RequestedAttribute v="Country"/>
  <urn:RequestedAttributeValue v="Permitted values: FI / SE / NO" />
</urn:RequestComponent>

</inf:request>
</inf:GetData>
</soap:Body>
</soap:Envelope> </soap:Body>
</soap:Envelope>

```

3.1.3.18 Merged Production

RequestedAttribute	RequestedAttributeValue
"DataFlow"	"MPR"
"TimeResolution"	"P1Y" – for yearly aggregated data "P1M" – for monthly aggregated data

eSett

2021-07-27

Public

10.10.2024

	<p>“P7D” – for weekly aggregated data</p> <p>“P1D” – for daily aggregated data</p> <p>“PT1H” – for hourly data</p> <p>“PT15M” – for 15-minutes data</p>
“TimeInterval”	<p>YYYY-MM-DDTHH:MM:SSZ/YYYY-MM-DDTHH:MM:SSZ</p> <p>System will take into account also parts of the intervals. So for example if there are demanded monthly aggregated data for this interval: “2015-01-02T02:00:00Z/2015-02-01T02:00:00Z” system will return data for January 2015 and February 2015.</p>
<p>“PartyRE”</p> <p>Optional</p>	<p>PARTY CODE – in v attribute</p> <p>CODING SCHEME – in CodingScheme attribute</p> <p>Code and Coding Scheme of desired Retailer.</p>
<p>“MGA”</p> <p>Optional</p>	<p>MGA CODE – in v attribute</p> <p>MGA CODING SCHEME – in CodingScheme attribute</p> <p>Code and Coding scheme of MGA</p>
<p>“Asset Type”</p> <p>Optional</p>	<p>“B14” Nuclear</p> <p>“B16” Solar</p> <p>“B20” Other production</p> <p>“Z04”, “B37” Thermal</p> <p>“Z05”, “B19” Wind onshore</p> <p>“B18” Wind offshore</p> <p>“B25” Energy storage</p> <p>“Z06”, “B31” Hydro</p> <p>Several PU types currently use local Z-codes as their asset type in the XML. These Z-codes will be replaced by standard codes i.e. ‘B37’ instead of ‘Z04’. Old Z-codes will be in use approximately till May ’25.</p>
<p>“Production Type”</p> <p>Optional</p>	<p>“Z01” Normal</p> <p>“Z02” Minor</p>

Request example

```
<soap:Envelope xmlns:inf="http://www.basse.eu/information-service-1.0"
xmlns:urn="urn:entsoe.eu:wgedi:components" xmlns:soap="http://www.w3.org/2003/05/soap-envelope">
  <soap:Header xmlns:wsa="http://www.w3.org/2005/08/addressing">
  </soap:Header>
  <soap:Body>
    <inf:GetData>
      <inf:request DtdVersion="?" DtdRelease="?">
```

10.10.2024

```
<urn:DocumentIdentification v=""/>
<urn:DocumentType v="A25"/>
<urn:SenderIdentification v="" codingScheme="" />
<urn:SenderRole v="" />
<urn:ReceiverIdentification v="" codingScheme="A01"/>
<urn:ReceiverRole v="A05"/>
<urn:CreationDateTime v="2021-09-01T00:00:00Z"/>
<urn:RequestComponent>
  <urn:RequestedAttribute v="Dataflow"/>
  <urn:RequestedAttributeValue v="MPR"/>
</urn:RequestComponent>
<urn:RequestComponent>
  <urn:RequestedAttribute v="TimeInterval"/>
  <urn:RequestedAttributeValue v="2021-08-20T00:00:00Z/2021-08-22T00:00:00Z"/>
</urn:RequestComponent>

<urn:RequestComponent>
  <urn:RequestedAttribute v="TimeResolution"/>
  <urn:RequestedAttributeValue v="PT1H"/>
</urn:RequestComponent>

<urn:RequestComponent>
  <urn:RequestedAttribute v="PartyRE"/>
  <urn:RequestedAttributeValue v="" codingScheme="" />
</urn:RequestComponent>
<urn:RequestComponent>
  <urn:RequestedAttribute v="MGA"/>
  <urn:RequestedAttributeValue v="" codingScheme="" />
</urn:RequestComponent>
<urn:RequestComponent>
  <urn:RequestedAttribute v="AssetType"/>
  <urn:RequestedAttributeValue v="Z04"/>
</urn:RequestComponent>
<urn:RequestComponent>
```

eSett

2021-07-27

Public

10.10.2024

```

    <urn:RequestedAttribute v="ProductionType"/>
    <urn:RequestedAttributeValue v="Z01"/>
    </urn:RequestComponent>

  </inf:request>
</inf:GetData>
</soap:Body>
</soap:Envelope>

```

3.1.3.19 Capacity Reserves

RequestedAttribute	Card.	RequestedAttributeValue
"DataFlow"	1..1	"CRE"
"TimeResolution"	1..1	"P1Y" – for yearly aggregated data "P1M" – for monthly aggregated data "P7D" – for weekly aggregated data "P1D" – for daily aggregated data "PT1H" – for hourly data
"TimeInterval"	1..1	YYYY-MM-DDTHH:MM:SSZ/YYYY-MM-DDTHH:MM:SSZ System will take into account also parts of the intervals. So for example if there are demanded monthly aggregated data for this interval: "2015-01-02T02:00:00Z/2015-02-01T02:00:00Z" system will return data for January 2015 and February 2015. System checks the Reserve Bid Time Interval and the market party. <ul style="list-style-type: none"> • If the Requested Time Interval is <Before BSP Go-live Date; After BSP Go-live Date>, then the request is rejected with [INVALID_TIME_INTERVAL]. • If the market party = BRP (A08) and Requested Time Interval is >= BSP Go-live Date, then the request is rejected with [INVALID_TIME_INTERVAL]. • If the market party = BSP (A46) and Requested Time Interval is < BSP Go-live Date, then the request is rejected with [INVALID_TIME_INTERVAL]. If the Requested interval in combination with resolution is expanded and the expanded period does not fulfill the conditions above, then the request is rejected with [INVALID_TIME_INTERVAL].
"BusinessType"	1..1	Business type is mandatory. Response may contain Capacity Reserves of one business type only.
"ReasonCode"	0..1	

eSett

2021-07-27

Public

10.10.2024

		Seek NBS BRS for TSO-MO at Nordic Balance Settlement (NBS) – Ediel.org for Dependency matrix for different combinations you are able to request.
"MBA"	0..1	CODE – in v attribute CODING SCHEME – in CodingScheme attribute Code and Coding Scheme of desired MBA

Request example

```
<soap:Envelope xmlns:soap="http://www.w3.org/2003/05/soap-envelope"
xmlns:inf="http://www.basse.eu/information-service-1.0" xmlns:urn="urn:entsoe.eu:wgedi:components">
  <soap:Header/>
  <soap:Body>
    <inf:GetData>
      <inf:request DtdVersion="?" DtdRelease="?">
        <urn:DocumentIdentification v=" "/>
        <urn:DocumentType v="A25"/>
        <urn:SenderIdentification v="" codingScheme=" "/>
        <urn:SenderRole v="A08"/>
        <urn:ReceiverIdentification v=" " codingScheme="A01"/>
        <urn:ReceiverRole v="A05"/>
        <urn:CreationDateTime v="2015-07-20T00:00:00Z"/>
        <urn:RequestComponent>
          <urn:RequestedAttribute v="Dataflow"/>
          <urn:RequestedAttributeValue v="CRE"/>
        </urn:RequestComponent>
        <urn:RequestComponent>
          <urn:RequestedAttribute v="TimeInterval"/>
          <urn:RequestedAttributeValue v="2021-09-07T00:00:00Z/2021-09-08T00:00:00Z"/>
        </urn:RequestComponent>
        <urn:RequestComponent>
          <urn:RequestedAttribute v="TimeResolution"/>
          <urn:RequestedAttributeValue v="PT1H"/>
        </urn:RequestComponent>
        <urn:RequestComponent>

```


eSett

2021-07-27

Public

10.10.2024

```

    <urn:RequestedAttribute v="MBA"/>
    <urn:RequestedAttributeValue v="" codingScheme="A01"/>
  </urn:RequestComponent>
  <urn:RequestComponent>
    <urn:RequestedAttribute v="BusinessType"/>
    <urn:RequestedAttributeValue v=" "/>
  </urn:RequestComponent>
  <urn:RequestComponent>
    <urn:RequestedAttribute v="ReasonCode"/>
    <urn:RequestedAttributeValue v=" "/>
  </urn:RequestComponent>
</inf:request>
</inf:GetData>
</soap:Body>
</soap:Envelope>

```

3.1.4 Handling of Optional Parameters

Some of the request parameters of Information Service are marked as optional. If any of these parameters are left out of the request XML document, it is assumed that the sender wants to get information about all the values, which are accessible to the sender.

E.g. when requesting Production hourly data, one can leave the Production Unit parameter out. The Information Service will then return values for all Production Units the sender is entitled to access. Please consider that in this scenario the response might (especially for large service providers) surpass the limit for maximal response size. The preferred solution is then to query smaller time interval (e.g. one day instead of one week).

3.1.5 Full example of the XML when sending request

You can send the XML files with headers or without depending on your own client. You can have a client that is configured to send the credentials with the message and therefore you don't need to include the credentials in the headers a second time.

Example without headers

```

<soap:Envelope xmlns:soap="http://www.w3.org/2003/05/soap-envelope"
  xmlns:inf="http://www.basse.eu/information-service-1.0" xmlns:urn="urn:entsoe.eu:wgedi:components">
  <soap:Header xmlns:wsa="http://www.w3.org/2005/08/addressing">

```

eSett

2021-07-27

Public

10.10.2024

```
</soap:Header>
<soap:Body>
  <inf:GetData>
    <inf:request DtdVersion="?" DtdRelease="?">
      <urn:DocumentIdentification v="1" />

      <urn:DocumentType v="A25" />

      <urn:SenderIdentification v="Your Market Partys Code" codingScheme="Your Market partys CodingScheme" />
      <urn:SenderRole v="A08" />

      <urn:ReceiverIdentification v="44X-00000000004B" codingScheme="A01" />
      <urn:ReceiverRole v="A05" />

      <urn:CreationDateTime v="2022-01-01T13:00:00Z" />

      <urn:RequestComponent>
        <urn:RequestedAttribute v="Dataflow" />
        <urn:RequestedAttributeValue v="Dataflow you wish to request" />
      </urn:RequestComponent>

      <urn:RequestComponent>
        <urn:RequestedAttribute v="TimeInterval" />
        <urn:RequestedAttributeValue v="2022-02-01T00:00Z/2022-03-01T00:00Z" />
      </urn:RequestComponent>

      <urn:RequestComponent>
        <urn:RequestedAttribute v="TimeResolution" />
        <urn:RequestedAttributeValue v=" PT1H " />
      </urn:RequestComponent>

      <urn:RequestComponent>
        <urn:RequestedAttribute v="MBA" />
        <urn:RequestedAttributeValue v="MBA Code here" codingScheme=" Insert correct codingScheme " />
      </urn:RequestComponent>
    </inf:request>
  </inf:GetData>
</soap:Body>
</soap:Envelope>
```

eSett

2021-07-27

Public

10.10.2024

```

    <urn:RequestComponent>

    <urn:RequestedAttribute v="BRP" />
      <urn:RequestedAttributeValue v="Insert BRP Code here" codingScheme="Insert correct codingScheme" />
    </urn:RequestComponent>

    <urn:RequestComponent>
      <urn:RequestedAttribute v="Currency" />
      <urn:RequestedAttributeValue v="EUR" />
    </urn:RequestComponent>

    </inf:request>
  </inf:GetData>
</soap:Body>
</soap:Envelope>

```

Here is also an example with headers included in the SOAP envelope

Example without headers

```

<soap:Envelope xmlns:soap="http://www.w3.org/2003/05/soap-envelope"
xmlns:inf="http://www.basse.eu/information-service-1.0" xmlns:urn="urn:entsoe.eu:wgedi:components">
  <soap:Header xmlns:wsa="http://www.w3.org/2005/08/addressing">
    <Security xmlns="http://docs.oasis-open.org/wss/2004/01/oasis-200401-wss-wssecurity-secext-1.0.xsd">
      <UsernameToken d4p1:Id="UsernameToken-49" xmlns:xsi="http://www.w3.org/2001/XMLSchema-instance"
xmlns:xsd="http://www.w3.org/2001/XMLSchema" xmlns:d4p1="http://docs.oasis-open.org/wss/2004/01/oasis-200401-wss-wssecurity-utility-1.0.xsd">
        <Username>YourONLSUsername</Username>
        <Password Type="http://docs.oasis-open.org/wss/2004/01/oasis-200401-wss-username-token-profile-1.0#PasswordText">YourONLSPassword</Password>
      </UsernameToken>
    </Security>
  </soap:Header>
  <wsa:Action>http://www.basse.eu/information-service-1.0/InformationService/GetData</wsa:Action>
  <wsa:To>https://service.esett.com/INFS/InformationService.svc</wsa:To>
</soap:Header>
  <soap:Body>
    <inf:GetData>

```

eSett

2021-07-27

Public

10.10.2024

```
<inf:request DtdVersion="?" DtdRelease="?">
  <urn:DocumentIdentification v="1" />

  <urn:DocumentType v="A25" />

  <urn:SenderIdentification v="Your Market Partys Code" codingScheme="Your Market partys CodingScheme" />
  <urn:SenderRole v="Your Market Party Role" />

  <urn:ReceiverIdentification v="44X-00000000004B" codingScheme="A01" />
  <urn:ReceiverRole v="A05" />

  <urn:CreationDateTime v="2022-01-01T13:00:00Z" />

  <urn:RequestComponent>
    <urn:RequestedAttribute v="Dataflow" />
    <urn:RequestedAttributeValue v="Dataflow you wish to request" />
  </urn:RequestComponent>

  <urn:RequestComponent>
    <urn:RequestedAttribute v="TimeInterval" />
    <urn:RequestedAttributeValue v="2022-02-01T00:00Z/2022-03-01T00:00Z" />
  </urn:RequestComponent>

  <urn:RequestComponent>
    <urn:RequestedAttribute v="TimeResolution" />
    <urn:RequestedAttributeValue v=" PT1H " />
  </urn:RequestComponent>

  <urn:RequestComponent>
    <urn:RequestedAttribute v="MBA" />
    <urn:RequestedAttributeValue v="MBA Code here" codingScheme="Insert correct codingScheme" />
  </urn:RequestComponent>
</urn:RequestComponent>
```

eSett

2021-07-27

Public

10.10.2024

```
<urn:RequestedAttribute v="BRP" />
  <urn:RequestedAttributeValue v="BRP Code here" codingScheme=" Insert correct codingScheme " />
</urn:RequestComponent>

<urn:RequestComponent>
  <urn:RequestedAttribute v="Currency" />
  <urn:RequestedAttributeValue v="EUR" />
</urn:RequestComponent>

  </inf:request>
</inf:GetData>
</soap:Body>
</soap:Envelope>
```